



Jamo

ENERGY

Mirage

athena
TECHNOLOGIES

CONSUMER

KLIPSCH AUDIO TECHNOLOGIES

R-15M Monitor Speaker Service Manual

<p>Product Type: R-15M Monitor Speaker Manual Part #: 1061500 Model Line: Reference Product Launch Year: 2014</p>
--

The information contained in this document is solely intended for service and repair of Klipsch Group, Inc product; use of this information to mimic or copy KGI designs is strictly prohibited and subject to prosecution.

Table of Contents

SPECIFICATIONS.....	2
R-15M SPECIFICATIONS	2
EXPLODED VIEW AND WARRANTY PARTS LIST.....	3
R-15M EXPLODED VIEW AND WARRANTY PARTS LIST	3
TROUBLESHOOTING GUIDELINES	4
TWEETER REMOVAL FOR R-15M	4
WOOFER REMOVAL FOR R-15M	12

Service Manual – Consumer

Specifications

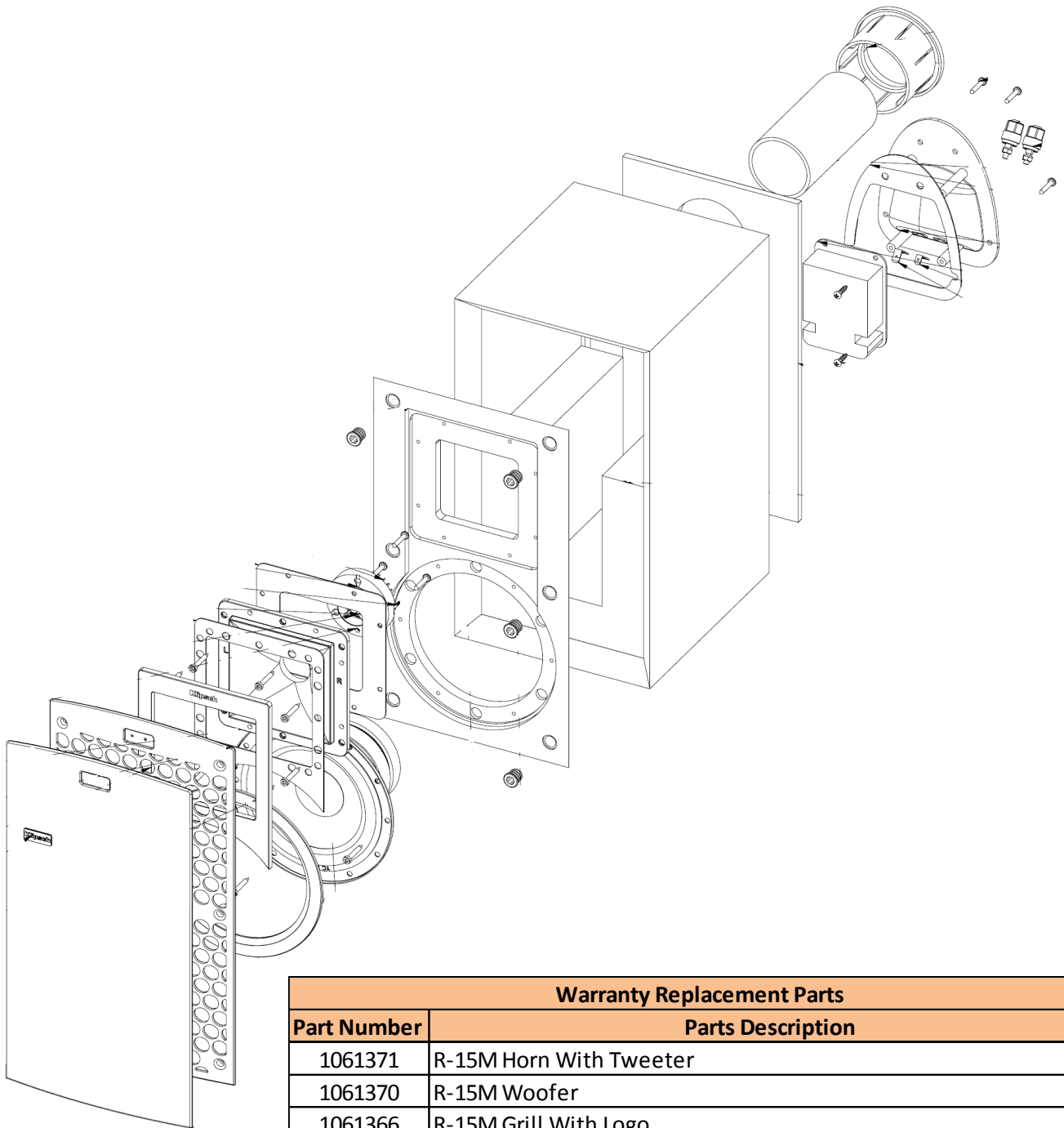
Cut Sheet Data

Model: **R-15M**

SPECIFICATIONS	
FREQUENCY RESPONSE	62Hz - 24kHz +/- 3dB
SENSITIVITY	94dB @ 2.83V / 1m
POWER HANDLING (CONT/PEAK)	85W/340W
NOMINAL IMPEDANCE	8 Ohms Compatible
LOW FREQUENCY EXTENSION	54Hz
CROSSOVER FREQUENCY	1800Hz
HIGH FREQUENCY DRIVER	1" (2.54cm) Aluminum diaphragm compression driver mated to 90° x 90° square Tractrix® Horn
LOW FREQUENCY DRIVER	5.25" (13.3cm), copper spun magnetically shielded IMG woofer
ENCLOSURE MATERIAL	MDF
ENCLOSURE TYPE	Bass-reflex via rear-firing port
INPUTS	Single binding posts
HEIGHT	12.5" (31.8 cm)
WIDTH	7" (17.8 cm)
DEPTH	8.1" (20.6 cm)
WEIGHT	10.3lbs (4.67 kg)
FINISH	Brushed Black Polymer Veneer
BUILT FROM	2014

Service Manual – Consumer

Exploded View



Warranty Replacement Parts	
Part Number	Parts Description
1061371	R-15M Horn With Tweeter
1061370	R-15M Woofer
1061366	R-15M Grill With Logo
1012850	R-15m/ KB-15 Network W/ Input Cup
60445	Synergy III Rubber Bumper

Service Manual – Consumer

Tweeter Removal for R-15M

Tools needed:

Small flat blade screwdriver

3mm hex (Allen) key

First, with a small flat blade screwdriver, gently pry the up the trim ring around the tweeter, highlighted in red



Service Manual – Consumer

Be sure to pry the trim ring up in between the tweeter horn and the trim ring as shown below.

Prying between the trim ring and the cabinet may cause damage to the cabinet.

Pry slowly around the edge of the tweeter horn to release all the clips.

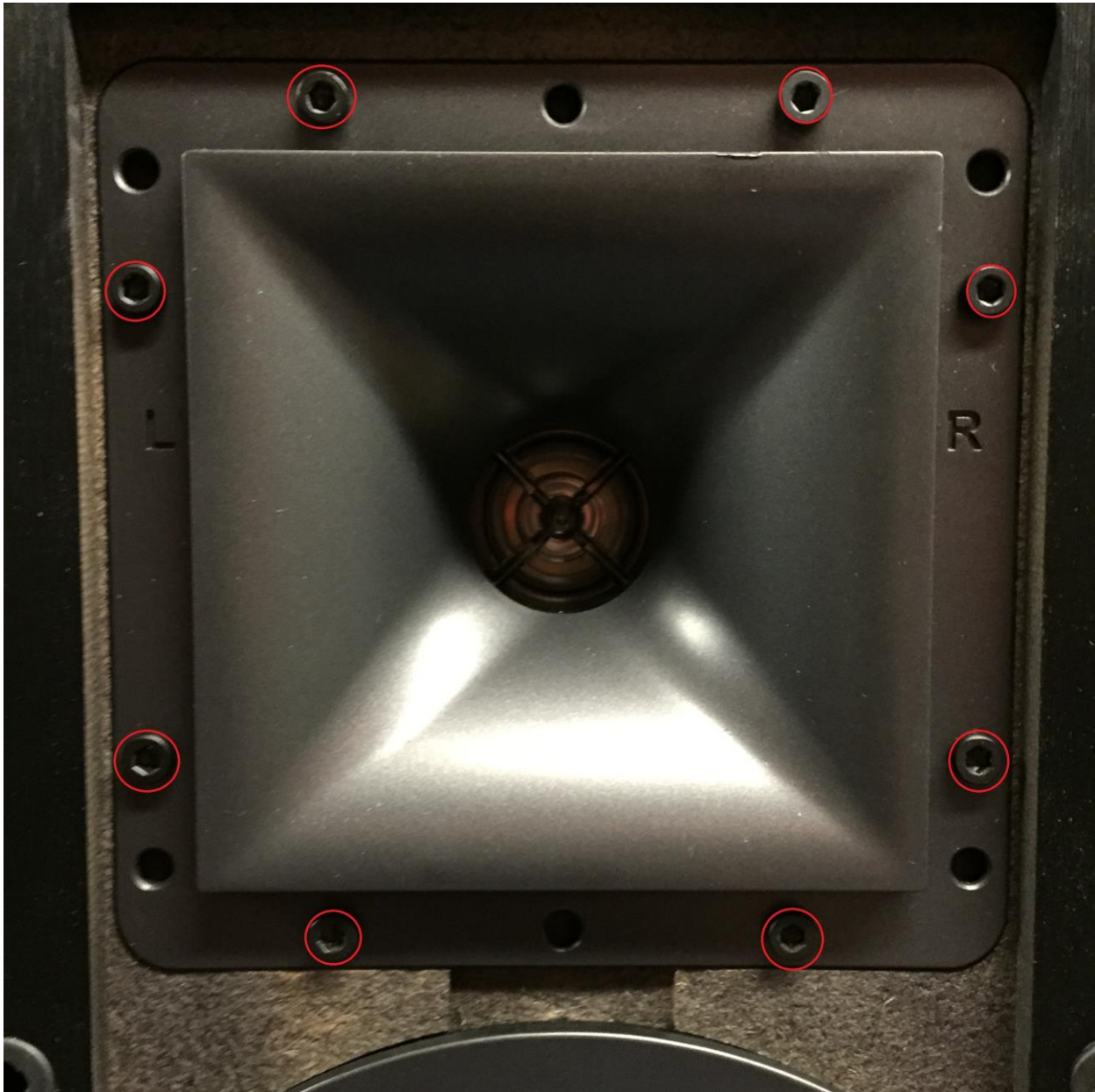


Service Manual – Consumer

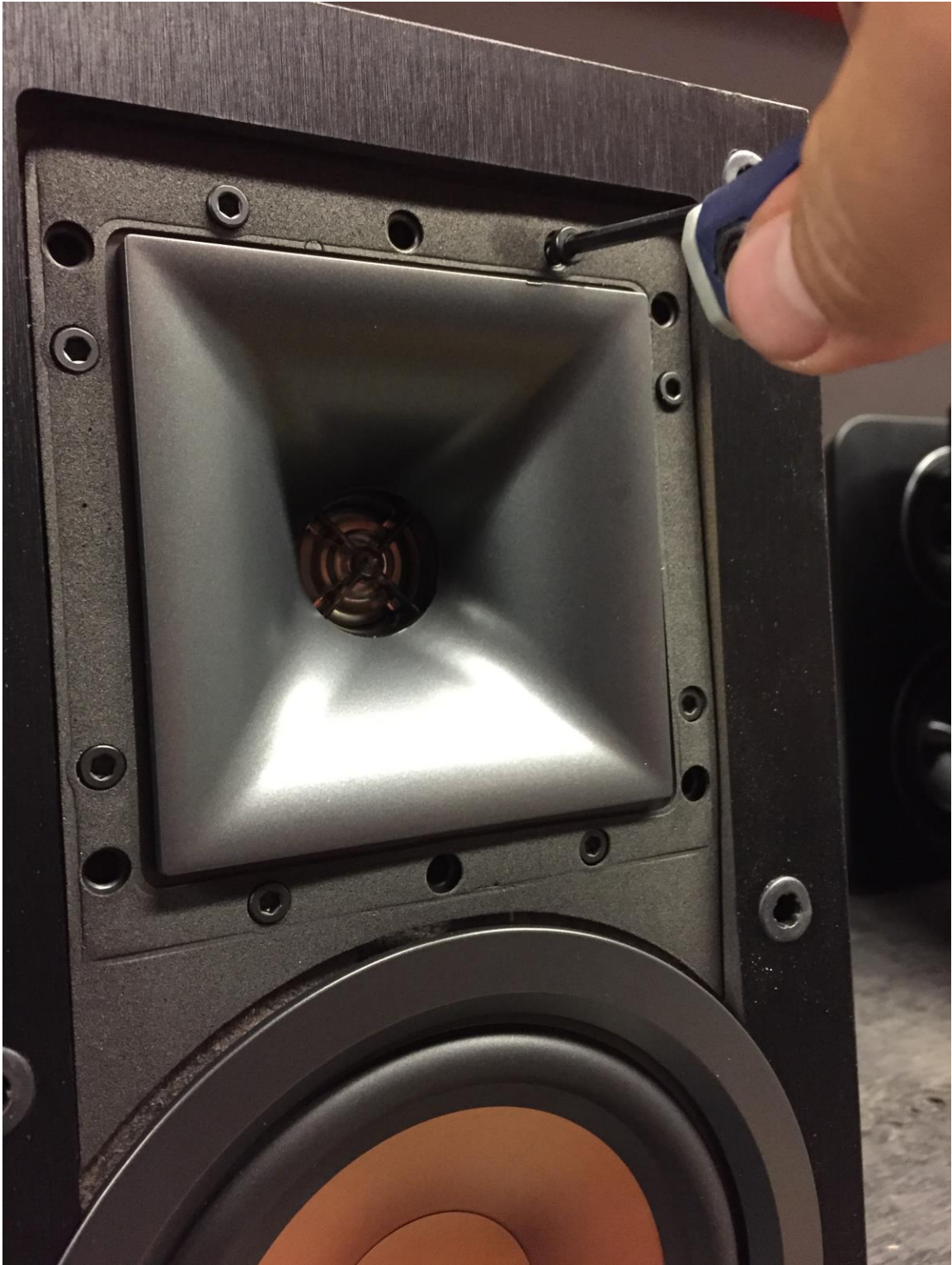
Once the trim ring is removed the speaker should look as shown below.

Next, begin removing the screws (highlighted below in red) from the perimeter of the tweeter horn.

There will be six (6) total screws to remove, each using a 3mm hex key head

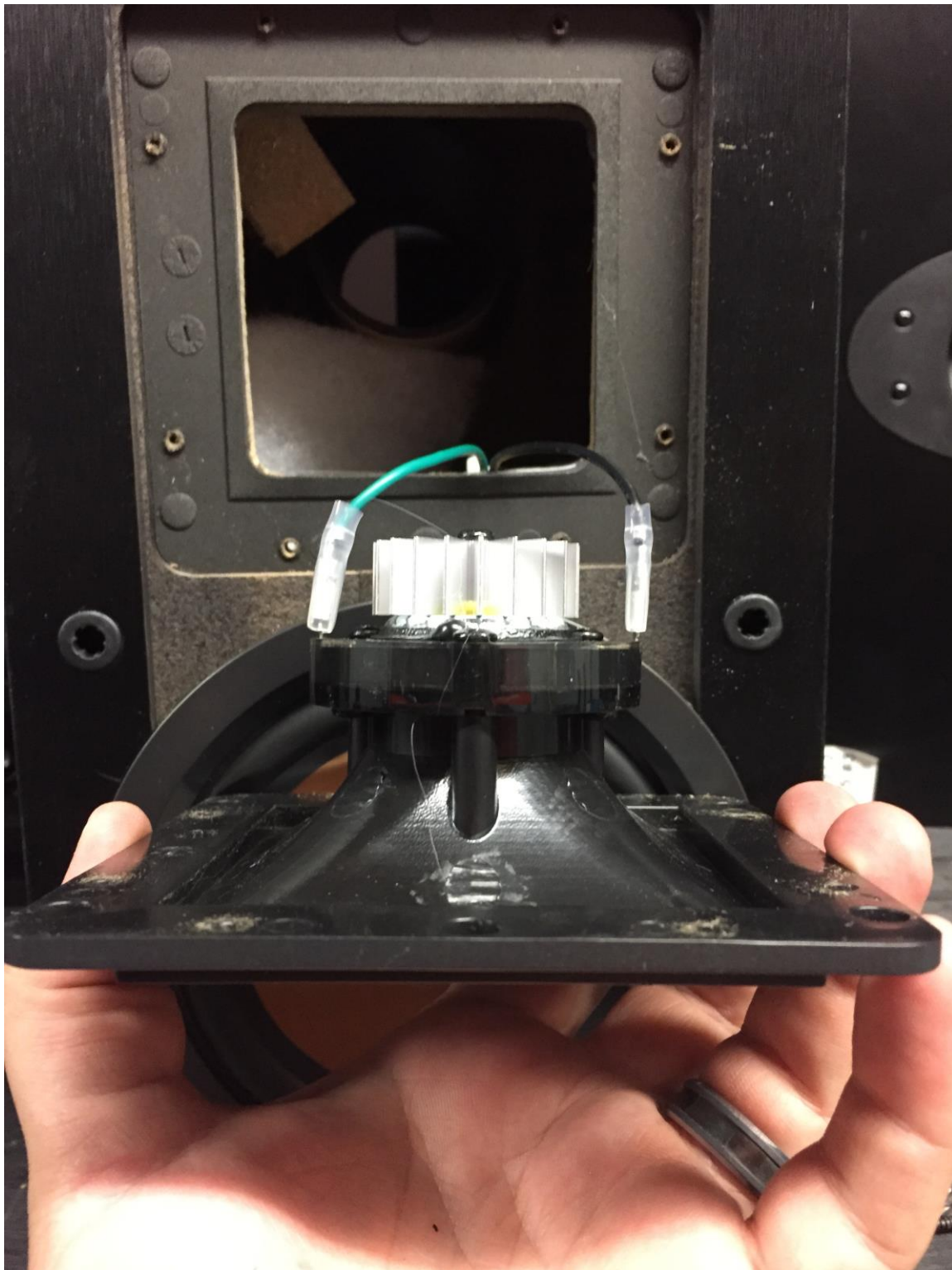


Service Manual – Consumer



Service Manual – Consumer

Once all the screws have been removed, the tweeter and tweeter horn should come free as shown below.



Service Manual – Consumer

Once the tweeter is removed from the cabinet, slide back the silicone covers on the terminals, and use a small flat blade screw driver to release the wire clips holding to the positive and negative terminals of the tweeter.



Service Manual – Consumer

Once the tweeter is removed, the speaker will look as shown below.



Service Manual – Consumer

Next, plug the wires on to the new tweeter, and slide the silicone covers back over the terminals.

Place the tweeter back into position, and replace the screws.

Replace the trim ring by setting into position and gently pressing the trim ring around the edge, verifying the clips on the back are locking into place. Once this is done, the trim ring should sit flush with the front of the speaker

Service Manual – Consumer

Troubleshooting Guides

Woofer Removal for R-15M

Tools needed:

Small flat blade screwdriver

3mm hex (Allen) key

First, with a small flat blade screwdriver, gently pry the up the trim ring around the woofer, highlighted in red



Service Manual – Consumer

Be careful when removing trim ring around the edge of the cabinet, rough handling may cause damage to the cabinet

Pry slowly around the edge of the trim ring to release all the clips.



Service Manual – Consumer

Once the trim ring is removed the speaker should look as shown below.

Next, begin removing the screws (highlighted below in red) from the perimeter of the tweeter horn.

There will be six (6) total screws to remove, each using a 3mm hex key head



Service Manual – Consumer



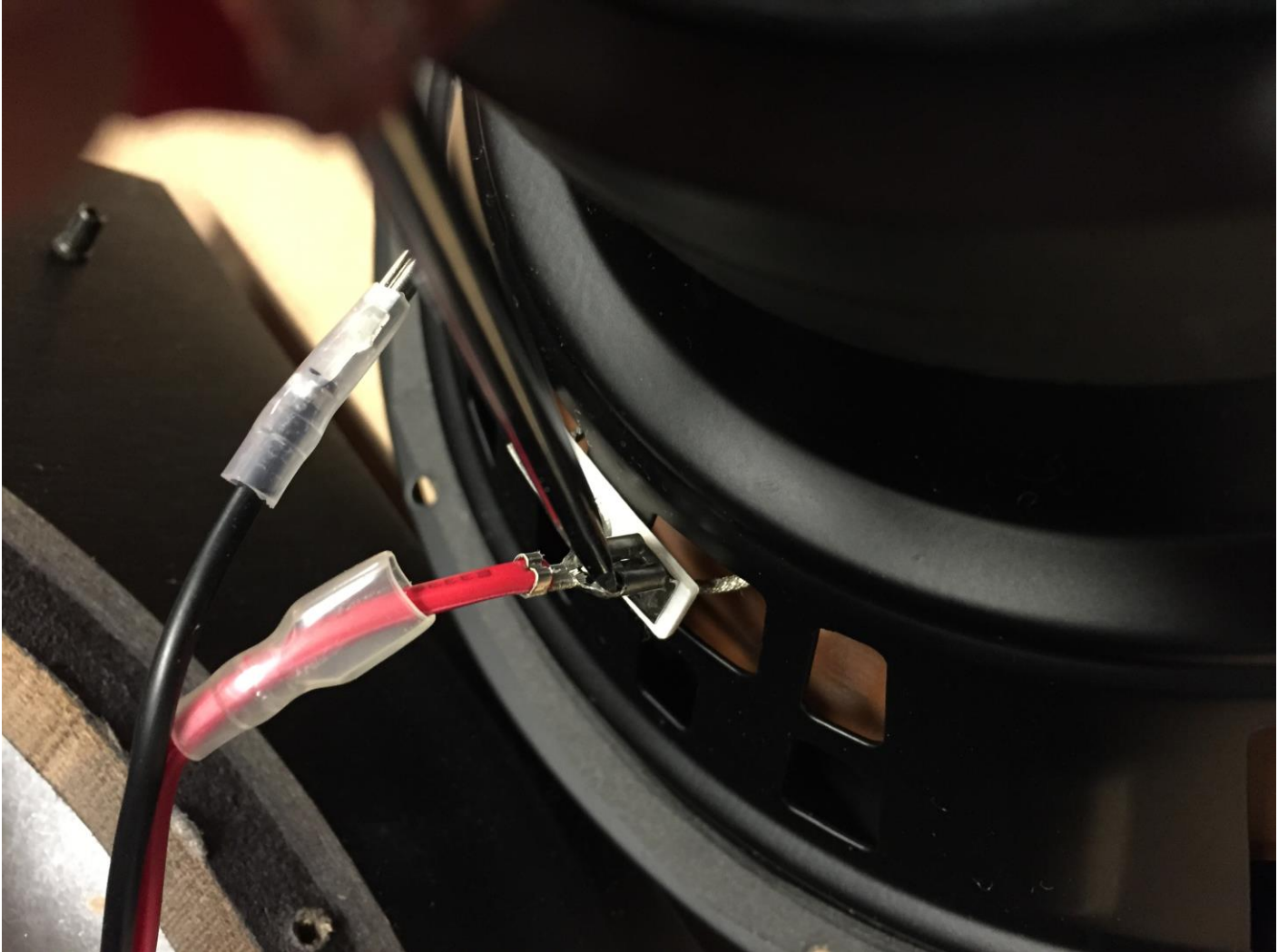
Service Manual – Consumer

Once all the screws have been removed, the woofer should come free as shown below.



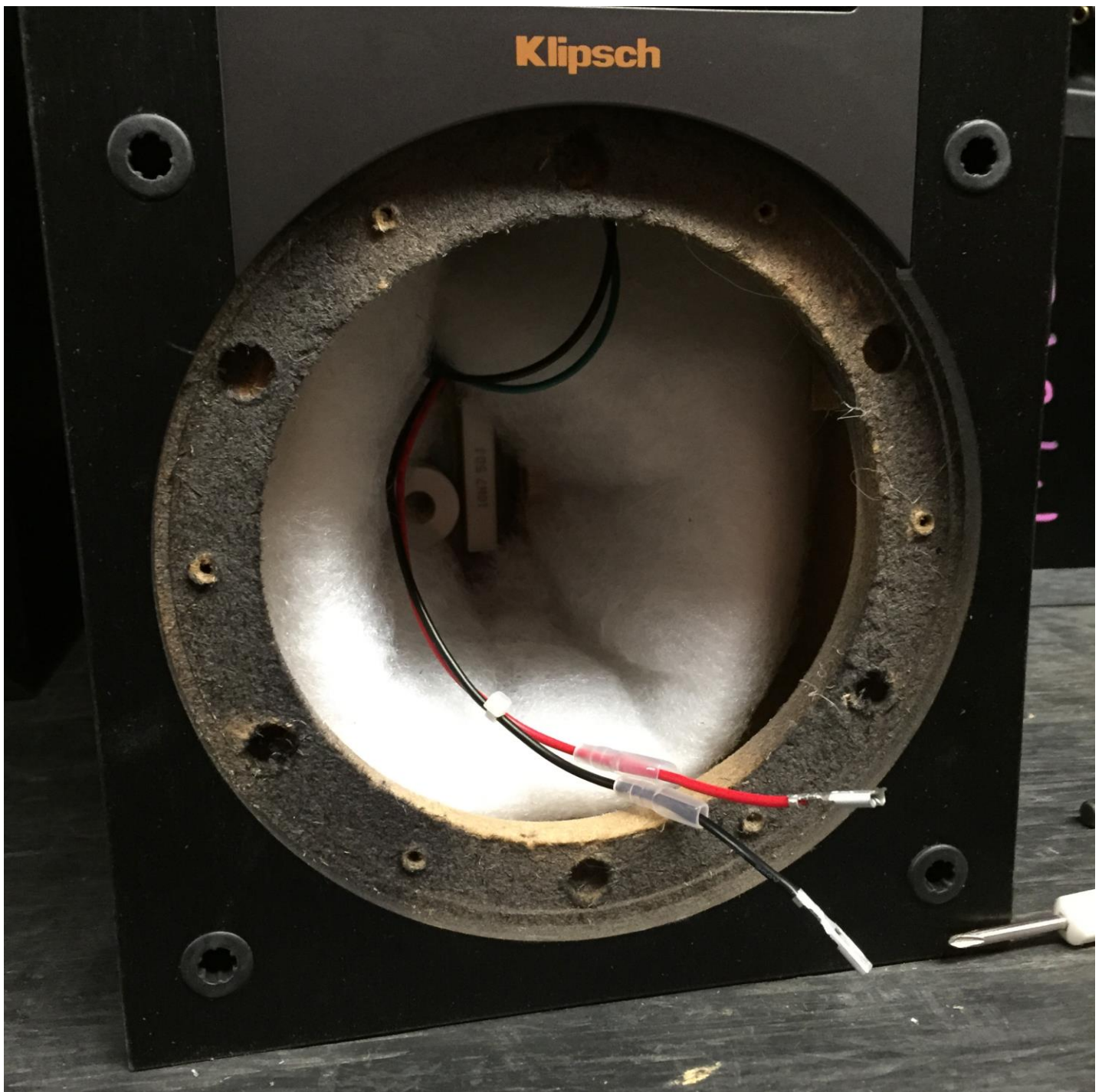
Service Manual – Consumer

Once the woofer is removed from the cabinet, slide back the silicone covers on the terminals, and use a small flat blade screw driver to release the wire clips holding to the positive and negative terminals of the woofer.



Service Manual – Consumer

Once the woofer is removed, the speaker should look as shown below.



Service Manual – Consumer

Next, plug the wires on to the new woofer, and slide the silicone covers back over the terminals.

Place the woofer back into position, and replace the screws.

Replace the trim ring by setting into position and gently pressing the trim ring around the edge, verifying the clips on the back are locking into place. Once this is done, the trim ring should sit flush with the front of the speaker