



**Klipsch**<sup>®</sup>  
S T R E A M

**KLIPSCH GATE**  
WIRELESS MUSIC  
ADAPTER WITH PLAY-FI<sup>®</sup>

# TABLE OF CONTENTS

---

2 - INSIDE

3 - CONTROLS

4 - REAR PANEL

5-6 - DTS PLAY-FI WIRELESS STREAMING TECHNOLOGY

7-8 - CONNECTIONS - WIFI

9 - DTS PLAY-FI WIRELESS STREAMING TECHNOLOGY

10 - SPOTIFY CONNECT

11-12 - CONNECTIONS - 3.5MM AUXILIARY

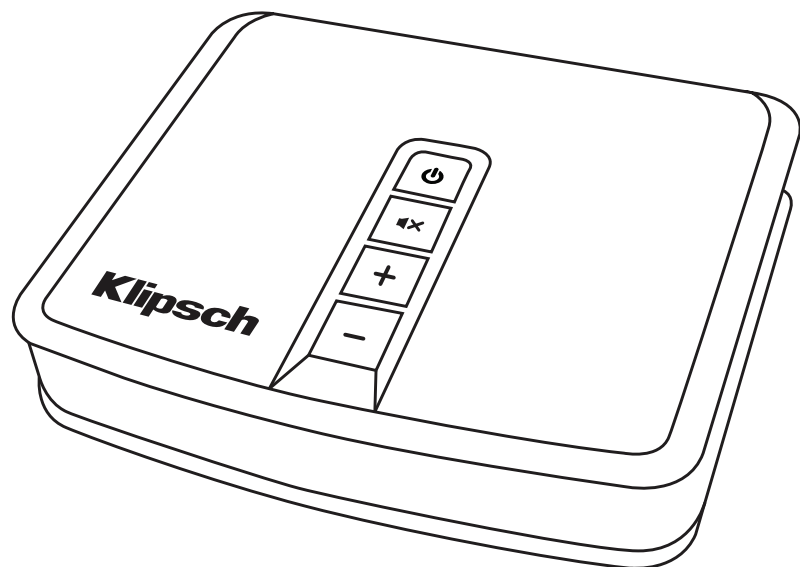
13 - POWER ON / STANDBY

14 - FACTORY RESET

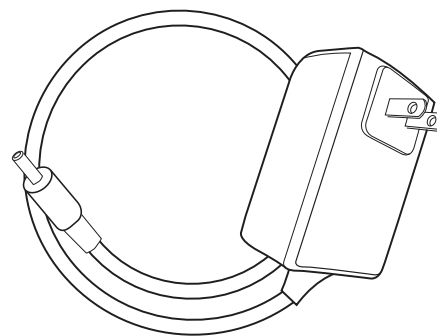
15 - POWER CONSUMPTION DISCLOSURE

# INSIDE

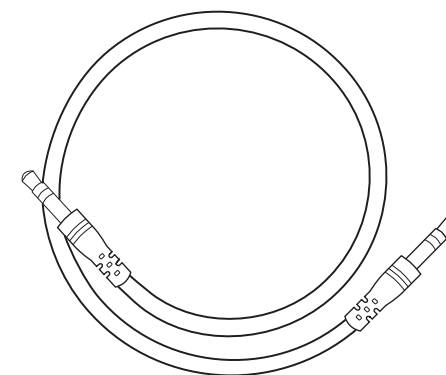
CONTENU • CONTENIDO • INHALT • CONTENUTO • CONTEÚDO • 目录



Gate



Power Supply



3.5 AUX Cable

## DC Power Cord

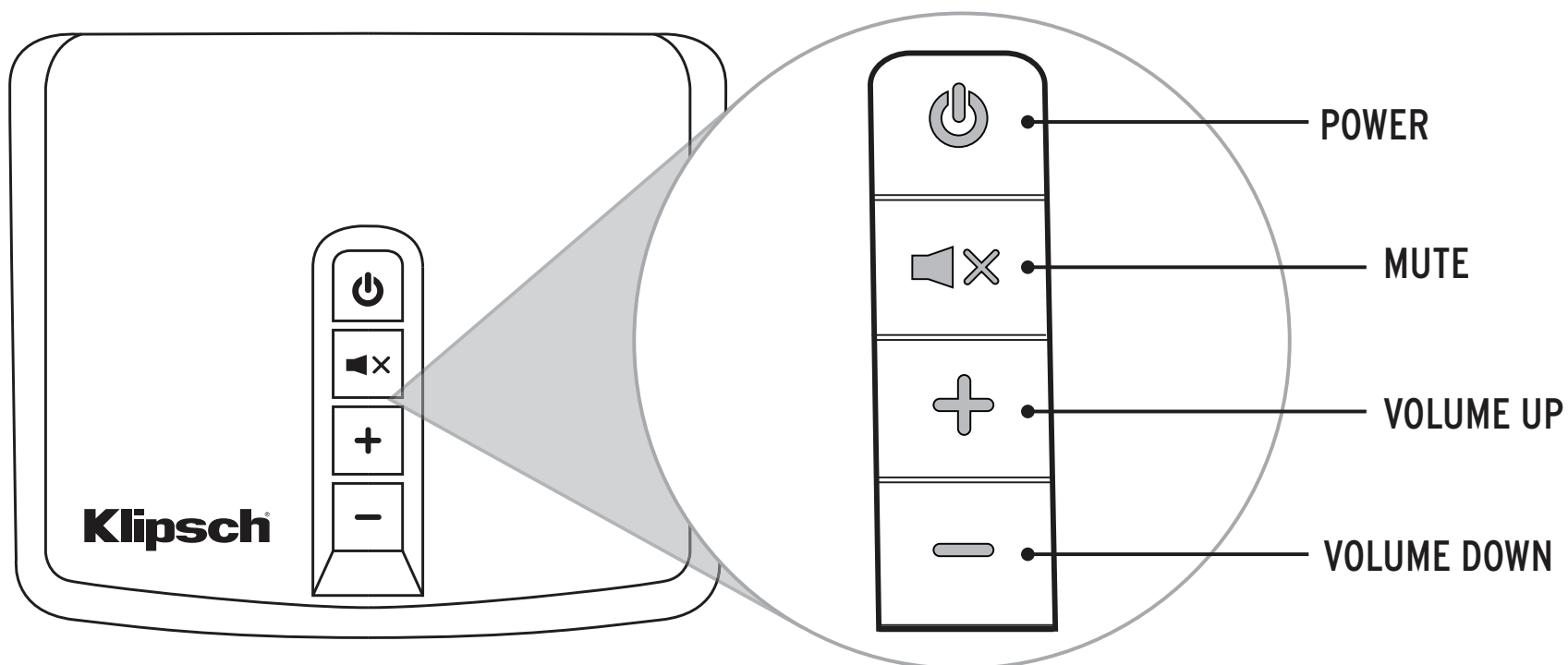
Cordon d'alimentation c.c.  
Cordón de alimentación de CC  
Gleichstromkabel  
Cavo di alimentazione CC  
Cabo de alimentação de CC  
直流电源线

## 3.5mm AUXILIARY

AUXILIAIRE 3,5mm  
3.5 mm AUXILIAR  
3,5-mm-AUX  
INGRESSO AUSILIARIO DA 3,5 mm  
AUXILIAR DE 3,5 MM  
3.5mm 辅助电缆

# CONTROLS

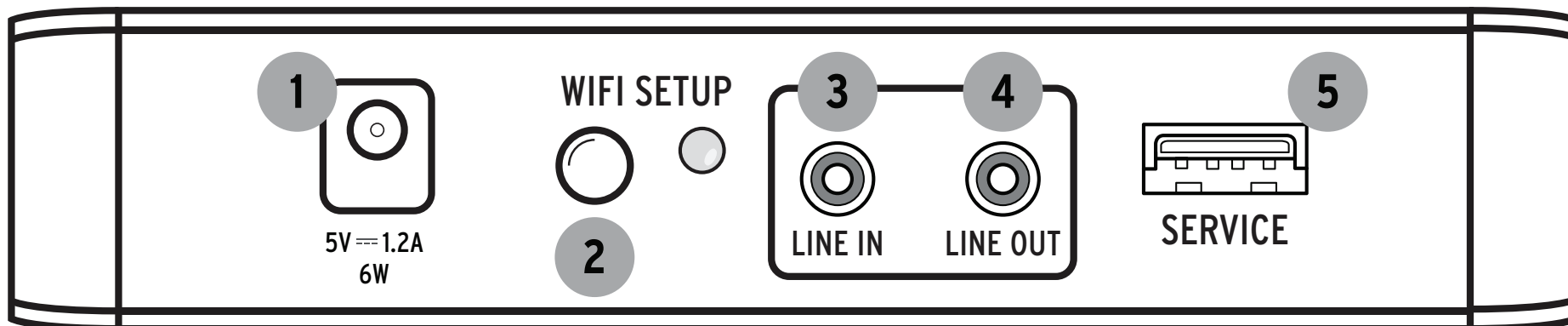
CONTRÔLES • CONTROLES • STEUERUNG • CONTROLLI • CONTROLES • 控制



<b>Power</b> Alimentation Alimentación Ein/Aus Acceso/Spento Liga/Desliga 电源	<b>Mute</b> Sourdine Silenciador Stummschaltung Disattivazione audio Desativar áudio 静音	<b>Volume Up</b> Volume haut Subida de volumen Lauter Aumento volume Aumentar o volume 音量增大	<b>Volume Down</b> Volume bas Bajada de volumen Leiser Riduzione volume Diminuir o volume 音量减小
--	---	---	--

# REAR PANEL

PANNEAU ARRIÈRE • PANEL TRASERO • RÜCKWAND • PANNELLO POSTERIORE • PAINEL TRASEIRO • 后面板



<p><b>1</b> <b>Power Input DC 5V</b> Prise d'alimentation Entrada de alimentación Netzanschluss Connettore di alimentazione Entrada de alimentação elétrica 电源输入口</p>	<p><b>2</b> <b>WiFi Setup</b> Configuration WiFi Configuración de Wi-Fi WLAN-Setup Selettore phono/linea Configuração de WiFi Wifi 设置</p>	<p><b>3</b> <b>Auxiliary 3.5mm Input</b> Entrée auxiliaire de 3,5 mm Entrada auxiliar de 3.5 mm 3,5-mm-AUX-Eingang Ingresso ausiliario da 3,5 mm Entrada auxiliar de 3,5 mm 辅助 3.5mm 输入</p>
---	---	---

<p><b>4</b> <b>Auxiliary 3.5MM Output</b> Sortie auxiliaire de 3,5 mm Salida auxiliar de 3.5 mm 3,5-mm-AUX-Ausgang Uscita ausiliaria da 3,5 mm Saída auxiliar de 3,5 mm 辅助 3.5MM 输出</p>	<p><b>5</b> <b>USB (firmware update)</b> USB (mise à jour du micrologiciel) USB (actualización de firmware) USB (Firmware-Update) USB (aggiornamento firmware) USB (atualização de firmware) USB (固件更新)</p>
---	---

# DTS PLAY-FI WIRELESS STREAMING TECHNOLOGY



TECHNOLOGIE DE DIFFUSION SANS FIL DTS PLAY-FI • TECNOLOGÍA DE STREAMING INALÁMBRICO PLAY-FI DE DTS • DTS PLAY-FI DRAHTLOSE STREAMING-TECHNOLOGIE • TECNOLOGIA STREAMING WIRELESS DTS PLAY-FI • TECNOLOGIA DE STREAMING SEM TECNOLOGIA DE STREAMING SEM FIO DTS PLAY-FI FIO DTS PLAY-FI • DTS PLAY-FI 无线串流技术

## CONNECT TO YOUR WiFi NETWORK

The Gate features DTS Play-Fi wireless multi-room streaming technology. Download the Klipsch Stream app, and listen to music from your personal library, internet streaming services like Tidal®, Pandora®, Spotify®, Amazon Prime Music®, iHeart Radio®, Sirius XM Radio, Deezer®, and independent internet radio stations like Disney, BBC, NPR, etc.

## SE CONNECTER AU RÉSEAU Wi-Fi

Le Gate est doté de la technologie de diffusion multi-pièce sans fil DTS Play-Fi. Téléchargez l'application Klipsch Stream et écoutez de la musique à partir de votre bibliothèque personnelle, des services de diffusion en ligne tels que Tidal®, Pandora®, Spotify®, Amazon Prime Music®, iHeart Radio®, Sirius XM Radio, Deezer®, et des stations de radio en ligne indépendantes telles que Disney, BBC, NPR, etc.

## CONECTE A SU RED DE WiFi

El altavoz Gate tiene tecnología de streaming inalámbrico multihabitación Play-Fi de DTS. Descargue la aplicación Klipsch Stream y escuche música de su biblioteca personal; sus servicios de streaming por Internet, tales como Tidal®, Pandora®, Spotify®, Amazon Prime Music®, iHeart Radio®, Sirius XM Radio, Deezer®; y sus emisoras de radio por Internet independientes, tales como Disney, BBC, NPR, etc.

## VERBINDEN SIE IHR WLAN

Das Gate-System bietet die drahtlose Streaming-Technologie DTS Play-Fi für mehrere Räume. Laden Sie die App Klipsch Stream herunter und hören Sie Musik aus Ihrer persönlichen Bibliothek oder über Internet-Streaming-Dienste wie Tidal®, Pandora®, Spotify®, Amazon Prime Music®, iHeart Radio®, Sirius XM Radio, Deezer® und unabhängige Internet-Radiosender wie Disney, BBC, NPR, usw.

## COLLEGAMENTO ALLA RETE WI-FI

Il SoundBar Gate presenta la tecnologia streaming multi-sala wireless DTS Play-Fi. Scarica l'app Klipsch Stream e ascolta musica personale, da servizi di streaming Internet come Tidal®, Pandora®, Spotify®, Amazon Prime Music®, iHeart Radio®, Sirius XM Radio, Deezer® e da stazioni radio Internet indipendenti come Disney, BBC, NPR, ecc.

## CONEXÃO À REDE WIFI

A Gate tem tecnologia de streaming multi-ambientes sem fio DTS Play-Fi. Baixe o aplicativo Klipsch Stream e ouça músicas de sua biblioteca pessoal, serviços de streaming da internet, como Tidal®, Pandora®, Spotify®, Amazon Prime Music®, iHeart Radio®, Sirius XM Radio, Deezer®, e estações de rádio na internet independentes, como Disney, BBC, NPR, etc.

## 连接至您的WiFi网络

Gate 采用了 DTS Play-Fi 无线多房间串流技术。下载 Klipsch 串流应用程序，聆听源自您的个人音乐库，诸如 Tidal®、Pandora®、Spotify®、Amazon Prime Music®、iHeart Radio®、Sirius XM Radio、Deezer® 之类互联网串流服务以及类似 Disney、BBC、NPR 等独立互联网无线电台的音乐。

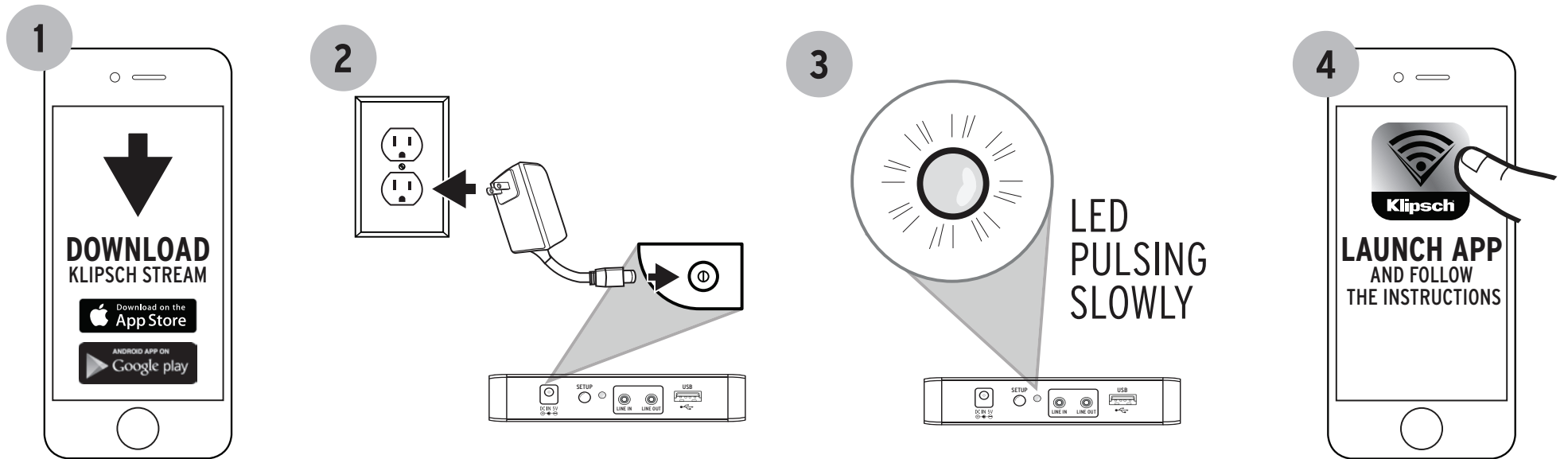
# DTS PLAY-FI WIRELESS STREAMING TECHNOLOGY

TECNOLOGIE DE DIFFUSION SANS FIL DTS PLAY-FI • TECNOLOGÍA DE STREAMING INALÁMBRICO PLAY-FI DE DTS • DTS PLAY-FI DRAHTLOSE STREAMING-TECHNOLOGIE • TECNOLOGIA STREAMING WIRELESS DTS PLAY-FI • TECNOLOGIA DE STREAMING SEM TECNOLOGIA DE STREAMING SEM FIO DTS PLAY-FI FIO DTS PLAY-FI • DTS PLAY-FI 无线串流技术

NETWORK AND SYSTEM REQUIREMENTS	CONFIGURATIONS DE SYSTÈME ET DE RÉSEAU REQUISES	REQUISITOS DE RED Y SISTEMA	NETZWERK- UND SYSTEMANFORDERUNGEN	REQUISITI DI RETE E DI SISTEMA	REQUISITOS DE SISTEMA E REDE	网络和系统要求
<ul style="list-style-type: none"> <li>• WiFi Router 802.11n or better</li> <li>• iOS device with version 6.0 operating system or newer</li> <li><b>OR</b></li> <li>• Android Smartphone/ tablet with version 2.2 operating system or newer</li> <li>• The password to your home WiFi network (if you have a WPS-enabled router, you don't need this)</li> </ul>	<ul style="list-style-type: none"> <li>• Router WiFi 802.11n ou meilleur</li> <li>• appareil iOS avec système d'exploitation de version 6.0 ou plus récente</li> <li><b>OU</b></li> <li>• Smartphone/ tablette Android avec système d'exploitation de version 2.2 ou plus récente</li> <li>• Le mot de passe du réseau Wi-Fi de votre domicile (si vous avez un routeur compatible WPS, vous n'en avez pas besoin)</li> </ul>	<ul style="list-style-type: none"> <li>• Router WiFi 802.11n o más reciente</li> <li>• Dispositivo iOS con sistema de operación versión 6.0 o más reciente</li> <li><b>O BIEN</b></li> <li>• Teléfono inteligente o tableta Android con sistema de operación versión 2.2 o más reciente</li> <li>• La contraseña de la red Wi-Fi de su casa (si tiene un router WPS, no necesita esto)</li> </ul>	<ul style="list-style-type: none"> <li>• WLAN-Router 802.11n oder besser</li> <li>• iOS-Gerät mit Betriebssystem 6.0 oder neuer</li> <li>• Android-Smartphone/ Tablet mit Betriebs-system 2.2 oder neuer</li> <li>• Das Passwort für Ihr WLAN (wenn Sie einen WPS-fähigen Router haben, benötigen Sie das nicht)</li> </ul>	<ul style="list-style-type: none"> <li>• Router Wi-Fi 802.11n o superiore</li> <li>• Dispositivo iOS con sistema operativo versione 6.0 o successiva</li> <li><b>OPPURE</b></li> <li>• Smartphone/ tablet Android con sistema operativo versione 2.2 o successiva</li> <li>• La password della rete Wi-Fi domestica (non necessaria se si usa un router compatibile con WPS)</li> </ul>	<ul style="list-style-type: none"> <li>• Roteador WiFi 802.11n ou melhor</li> <li>• Dispositivo iOS com a versão 6.0 do sistema operacional ou mais recente</li> <li><b>OU</b></li> <li>• Smartphone/ tablet Android com a versão 2.2 do sistema operacional ou mais recente</li> <li>• A senha da rede WiFi doméstica (se o roteador for habilitado para WPS, não é necessária)</li> </ul>	<ul style="list-style-type: none"> <li>• WiFi 路由器 802.11n 或更佳性能</li> <li>• 帶有 6.0 或更新版本操作系统的 iOS 裝置 或 帶有 2.2 或更新版本操作系统的 Android 智能手机/平板电脑</li> <li>• 您家里 WiFi 网络的密码 (如果您拥有支持 WPS 的路由器, 则不需要此密码)</li> </ul>

# CONNECTIONS - WIFI NETWORK (NOTE: PLAY-FI REQUIRES USE OF AN 802.11N WIRELESS ROUTER OR BETTER)

CONNEXIONS - RÉSEAU WI-FI (REMARQUE : PLAY-FI NÉCESSITE L'UTILISATION D'UN ROUTEUR SANS FIL 802.11N OU MIEU) • CONEXIONES - RED WI-FI (NOTA: PLAY-FI REQUIERE UN ROUTER INALÁMBRICO 802.11N O MÁS RECIENTE) • ANSCHLÜSSE - WLAN (HINWEIS: PLAY-FI ERFORDERT DIE VERWENDUNG EINES WLAN-ROUTERS NACH DER NORM 802.11N ODER BESSER) • CONNESSIONI - RETE WI-FI (NOTA: PLAY-FI RICHIEDE L'USO DI UN ROUTER WIRELESS 802.11N O SUPERIORE) • CONEXÕES - REDE WIFI (OBSERVAÇÃO: O PLAY-FI REQUER O USO DE UM ROTEADOR SEM FIO 802.11N OU MELHOR) • 连接 - WIFI 网络 备注：PLAY-FI 需要使用 802.11N 或性能最佳的无线路由器





## CONNECTIONS - WIFI NETWORK (NOTE: PLAY-FI REQUIRES USE OF AN 802.11N WIRELESS ROUTER OR BETTER)

CONNEXIONS - RÉSEAU WI-FI (REMARQUE : PLAY-FI NÉCESSITE L'UTILISATION D'UN ROUTEUR SANS FIL 802.11N OU MIEU) • CONEXIONES - RED WI-FI (NOTA: PLAY-FI REQUIERE UN ROUTER INALÁMBRICO 802.11N O MÁS RECIENTE) • ANSCHLÜSSE - WLAN (HINWEIS: PLAY-FI ERFORDERT DIE VERWENDUNG EINES WLAN-ROUTERS NACH DER NORM 802.11N ODER BESSER) • CONNESSIONI - RETE WI-FI (NOTA: PLAY-FI RICHIEDE L'USO DI UN ROUTER WIRELESS 802.11N O SUPERIORE) • CONEXÕES - REDE WIFI (OBSERVAÇÃO: O PLAY-FI REQUER O USO DE UM ROTEADOR SEM FIO 802.11N OU MELHOR) • 连接 - WIFI 网络 备注：PLAY-FI 需要使用 802.11N 或性能更佳的路由器

# IF

**LED IS NOT PULSING**

SI L'ICÔNE NE CLIGNOTE PAS

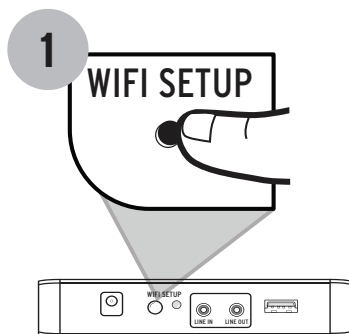
SI EL ICONO NO ESTÁ OSCILANDO

WENN SYMBOL NICHT BLINKT

SE L'ICONA NON LAMPEGGIA

SE O ÍCONE NÃO ESTIVER PULSANDO

如果图标未脉动



**HOLD 10 SECONDS**

MAINTENEZ ENFONCÉ PENDANT 10 SECONDES

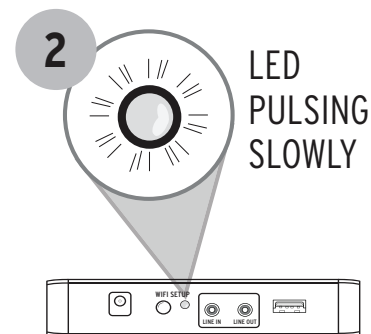
MANTENGA OPRIMIDO 10 SEGUNDOS

10 SEKUNDEN GEDRÜCKT HALTEN

TENERE PREMUTO PER 10 SECONDI

MANter PRESSIONADO POR 10 SEGUNDOS

按住 10 秒



# IF

**YOU HAVE A WPS ROUTER**

SI VOUS AVEZ UN ROUTEUR WPS

SI TIENE UN ROUTER WPS

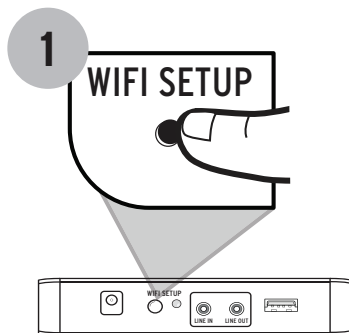
WENN SIE EINEN WPS-ROUTER

HABEN

SE SI USA UN ROUTER WPS

SE O ROTEADOR FOR WPS

如果您拥有 WPS 路由器



**HOLD 4 SECONDS**

MAINTENEZ ENFONCÉ PENDANT 4 SECONDES

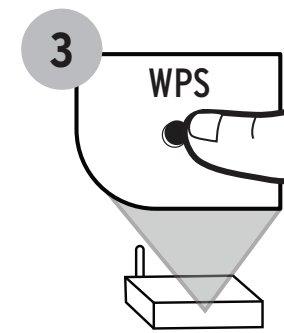
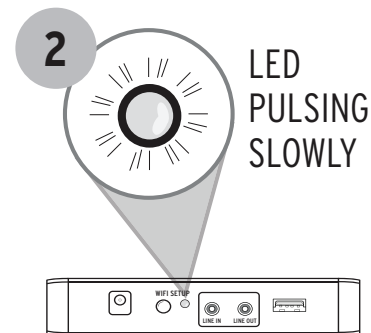
MANTENGA OPRIMIDO 4 SEGUNDOS

4 SEKUNDEN GEDRÜCKT HALTEN

TENERE PREMUTO PER 4 SECONDI

MANter PRESSIONADO POR 4 SEGUNDOS

按住 4 秒



# DTS PLAY-FI WIRELESS STREAMING TECHNOLOGY

TECNOLOGIE DE DIFFUSION SANS FIL DTS PLAY-FI • TECNOLOGÍA DE STREAMING INALÁMBRICO PLAY-FI DE DTS • DTS PLAY-FI DRAHTLOSE STREAMING-TECHNOLOGIE • TECNOLOGIA STREAMING WIRELESS DTS PLAY-FI • TECNOLOGIA DE STREAMING SEM TECNOLOGIA DE STREAMING SEM FIO DTS PLAY-FI FIO DTS PLAY-FI • DTS PLAY-FI 无线串流技术

## ADD OTHER KLIPSCH WIRELESS MULTI-ROOM STREAMING SPEAKERS

From the Klipsch Stream app:

1. Choose "Settings"
2. Add "DTS Play-Fi Device"
3. Follow the instructions on your mobile device.

## AJOUTER D'AUTRES HAUT-PARLEURS DE DIFFUSION MULTI-PIÈCES SANS FIL KLIPSCH

Dans l'application Klipsch Stream :

1. Choisir « Settings » (Réglages)
2. Ajouter « DTS Play-Fi Device » (Appareil DTS Play-Fi)
3. Suivez les instructions sur votre appareil mobile.

## AGREGUE ALTAVOCES KLIPSCH DE STREAMING INALÁMBRICO MULTIHABITACIÓN

En la aplicación Klipsch Stream:

1. Escoja "Settings" (Configuraciones)
2. Agregue "DTS Play-Fi Device" (Dispositivo Play-Fi de DTS)
3. Siga las instrucciones que aparecen en su dispositivo móvil.

## WEITERE DRAHTLOSE KLIPSCH-LAUTSPRECHER FÜR DAS STREAMING IN MEHREREN RÄUMEN HINZUFÜGEN

Gehen Sie in der App Klipsch Stream folgendermaßen vor:

1. Wählen Sie „Settings“ (Einstellungen)
2. Fügen Sie „DTS Play-Fi Device“ (DTS Play-Fi-Gerät) hinzu
3. Folgen Sie den Anweisungen auf Ihrem Mobilgerät.

## PER AGGIUNGERE ALTRI ALTOPARLANTI STREAMING MULTISALA WIRELESS KLIPSCH

Dall'app Klipsch Stream:

1. Scegliere "Settings" (Impostazioni).
2. Aggiungere "DTS Play-Fi Device" (Dispositivo DTS Play-Fi).
3. Seguire le istruzioni sul dispositivo mobile.

## ADIÇÃO DE OUTRAS CAIXAS ACÚSTICAS DE STREAMING MULTIAMBIENTES SEM FIO DA KLIPSCH

No aplicativo Klipsch Stream:

1. Escolha "Settings" (Configurações).
2. Adicione "DTS Play-Fi Device" (Dispositivo DTS Play-Fi).
3. Siga as instruções exibidas no dispositivo móvel.

从 Klipsch 串流应用程序

添加其他 Klipsch 无线多房间串流扬声器：

1. 选择“设置”
2. 添加“DTS Play-Fi 装置”
3. 遵循移动装置上的说明进行操作。

## HOW TO USE CONNECT



You'll need Spotify Premium to use Connect, see details overleaf.

1. Add your new device to the same wifi network as your phone, tablet or PC (see product user instructions for details).
2. Open the Spotify app on your phone, tablet or PC, and play any song.
3. If you're using the app on a phone - tap the song image in the bottom left of the screen. For tablet and PC move to step 4.

4. Tap the Connect icon 

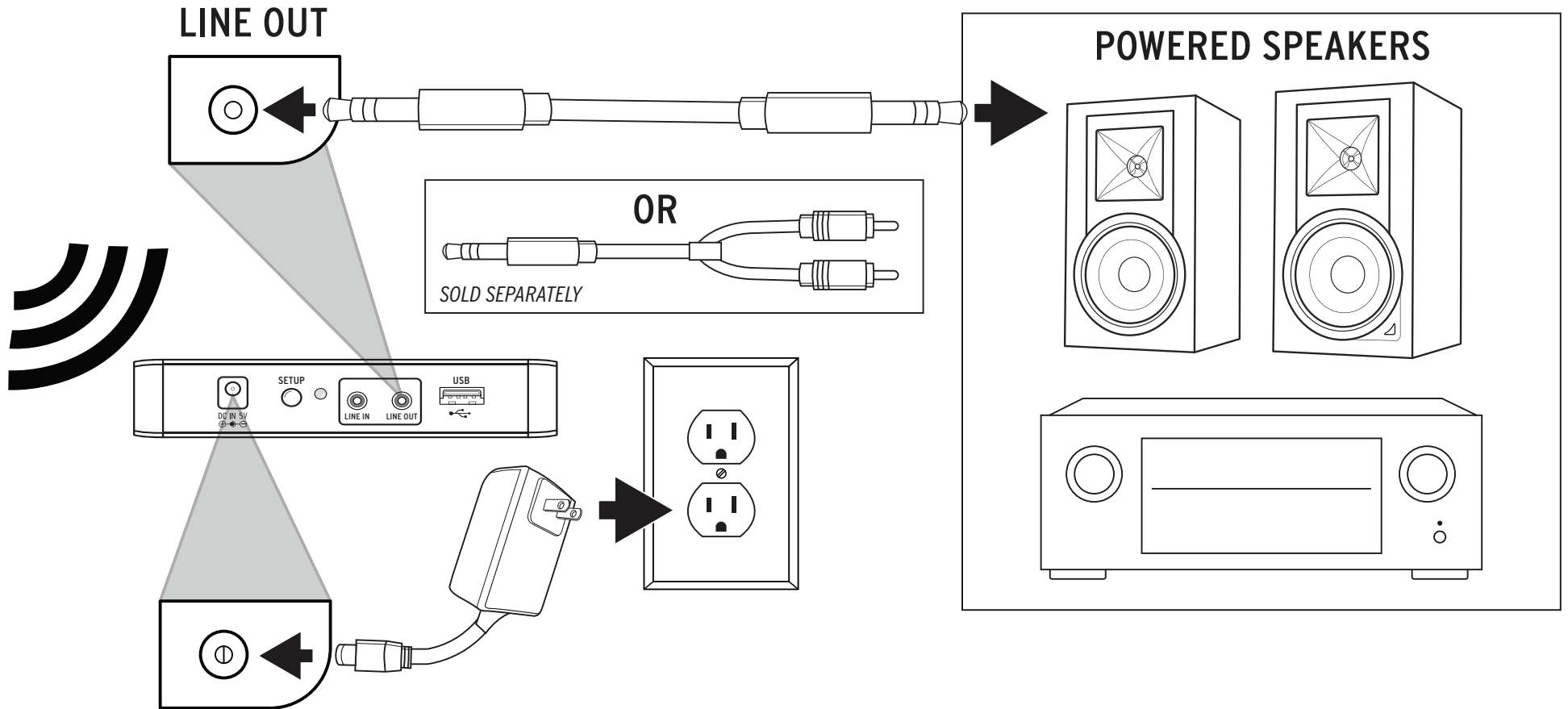
5. Pick your device from the list. If you can't see it, just check it's connected to the same wifi network as your phone, tablet or PC.
- All done! Happy listening.

### Licenses

The Spotify Software is subject to third party licenses found here:  
[www.spotify.com/connect/third-party-licenses](http://www.spotify.com/connect/third-party-licenses).

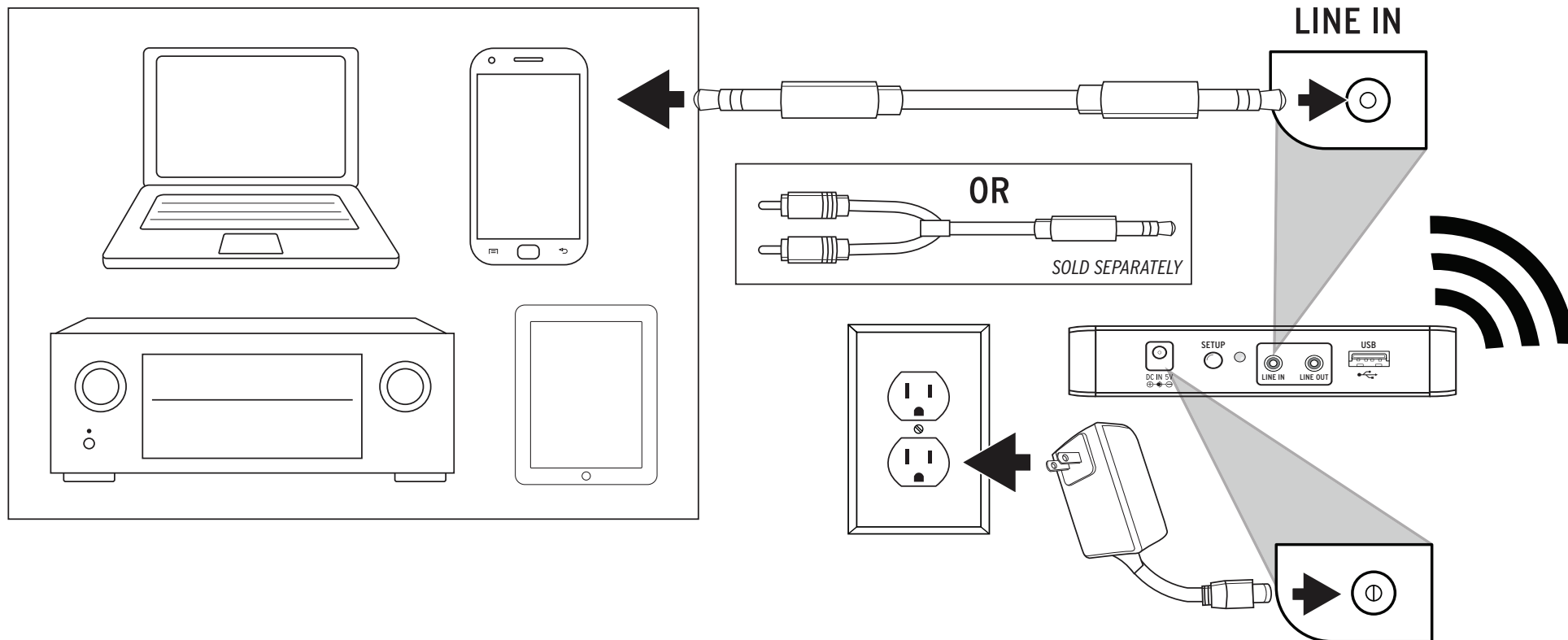
# CONNECTIONS - 3.5MM AUXILIARY - OUTPUT

CONNEXIONS - AUXILIAIRE 3,5MM • CONEXIONES - 3.5 MM AUXILIAR • ANSCHLÜSSE - 3,5-MM-AUX • CONNESSIONI - INGRESSO AUSILIARIO DA 3,5 MM • CONEXÕES - AUXILIAR DE 3,5 MM • 连接 - 3.5MM 辅助电缆



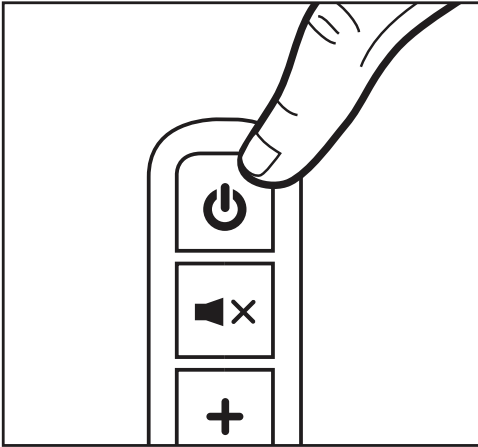
# CONNECTIONS - 3.5MM AUXILIARY - INPUT

CONNEXIONS - AUXILIAIRE 3,5MM • CONEXIONES - 3.5 MM AUXILIAR • ANSCHLÜSSE - 3,5-MM-AUX • CONNESSIONI - INGRESSO AUSILIARIO DA 3,5 MM • CONEXÕES - AUXILIAR DE 3,5 MM • 连接 - 3.5MM 辅助电缆



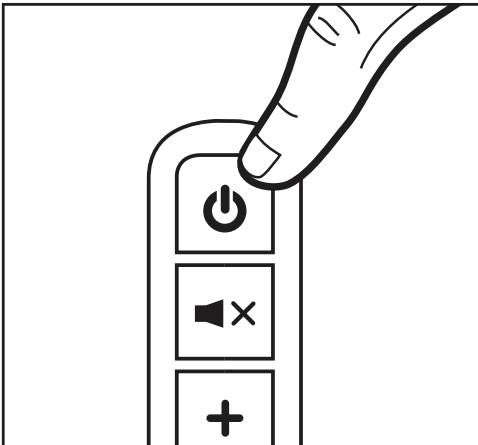
# POWER ON / STANDBY

MISE SOUS TENSION / VEILLE • ENCENDIDO / EN ESPERA • EIN / STANDBY • ACCESO / STANDBY • LIGADO / ESPERA • 接通电源 / 待机



## PRESS ONCE TO POWER ON

APPUYER UNE FOIS POUR METTRE SOUS TENSION  
OPRIMIR UNA VEZ PARA ENCENDER  
ZUM EINSCHALTEN EINMAL DRÜCKEN  
PREMERE UNA VOLTA PER ACCENDERE  
PRESSIONE UMA VEZ PARA LIGAR  
按一下接通电源

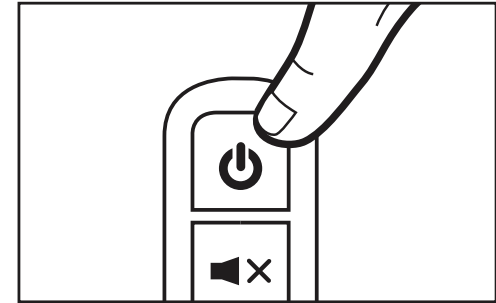


## PRESS AGAIN TO ENTER STANDBY MODE

APPUYER À NOUVEAU POUR PASSER EN MODE VEILLE  
OPRIMIR OTRA VEZ PARA ENTRAR A MODALIDAD EN ESPERA  
FÜR STANDBY-MODUS ERNEUT DRÜCKEN  
PREMERE DI NUOVO PER SELEZIONARE LA MODALITÀ DI STANDBY  
PRESSIONE NOVAMENTE PARA INICIAR O MODO DE ESPERA  
再按一下进入待机模式

## HOLD 10 SECONDS

APPUYER PENDANT 10 SECONDES  
MANTENGA OPRIMIDO DURANTE 10 SEGUNDOS  
10 SEKUNDEN GEDRÜCKT HALTEN  
TENERE PREMUTO PER 10 SECONDI  
MANTER PRESSIONADO POR 10 SEGUNDOS  
保持 10 秒

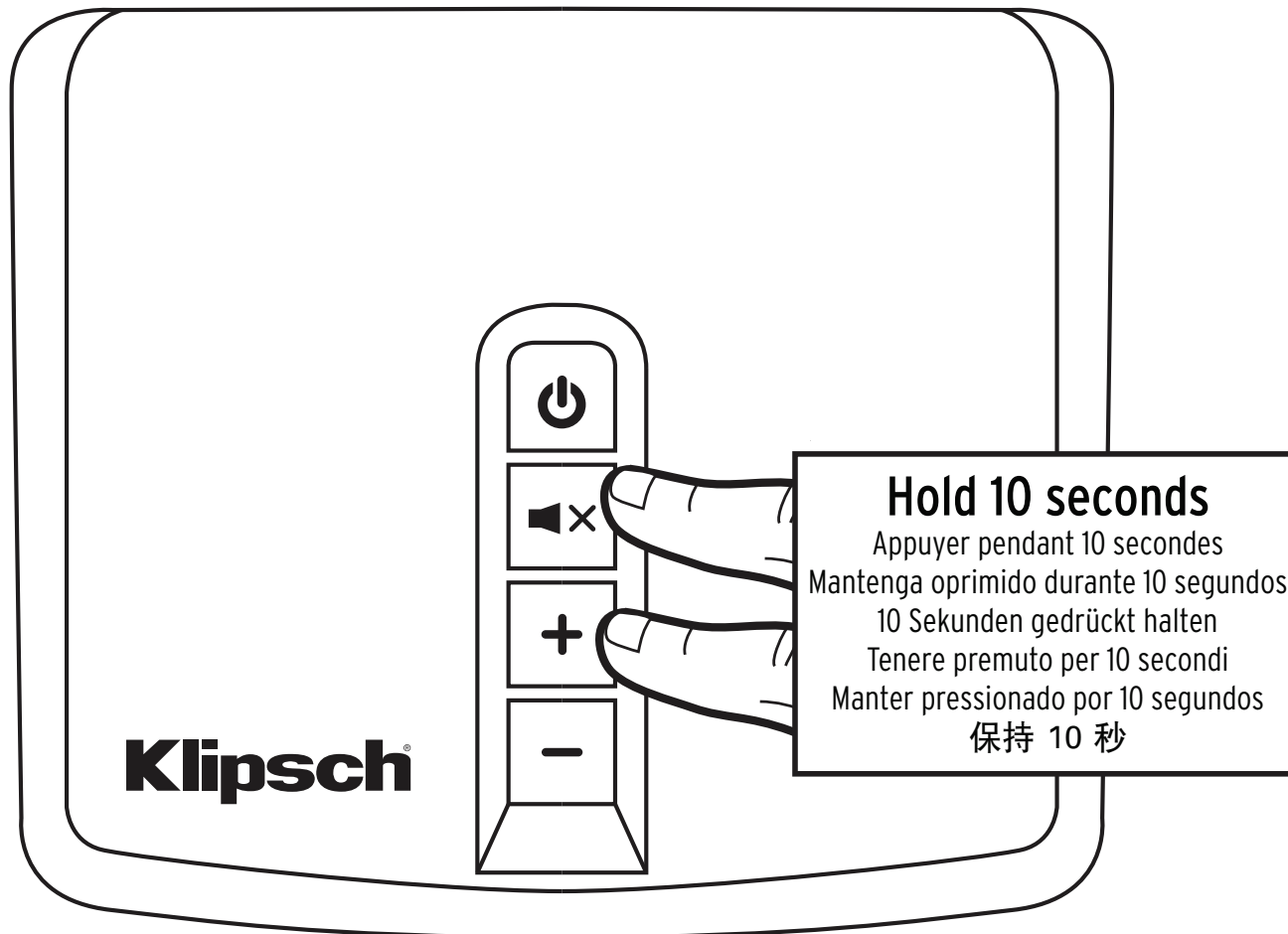


## FULL STANDBY MODE

EN MODE DE VEILLE COMPLÈTE  
MODALIDAD DE ESPERA TOTAL  
DEN VOLLEN STANDBYMODUS ÜBER  
MODALITÀ DI STANDBY COMPLETO  
MODO DE ESPERA TOTAL  
全待机模式

# FACTORY RESET

RÉINITIALISATION • RESTABLECIMIENTO DE FÁBRICA • RÜCKSETZUNG AUF WERKSEINSTELLUNG • RIPRISTINO IMPOSTAZIONI DI FABBRICA • RESTABELECIMENTO DAS CONFIGURAÇÕES DE FÁBRICA • 恢复出厂设置



# POWER CONSUMPTION DISCLOSURE

---

DÉCLARATION SUR LA CONSOMMATION ÉLECTRIQUE • REVELACIÓN DE CONSUMO DE ELECTRICIDAD • HINWEIS ZUM STROMVERBRAUCH • INFORMATIVA SUL CONSUMO DI POTENZA • DIVULGAÇÃO DE CONSUMO DE ENERGIA • 功耗披露

**Klipsch Gate is classified as a Networked Equipment with High Network Availability Functionality (HINA) product.**

**Klipsch Gate will automatically switch to network standby mode after 15 minutes of no activity. The power consumption of Klipsch Gate in network standby mode is 4.60W.**

**After 168 hours with no activity, Klipsch Gate will go to full standby mode. The power consumption of Klipsch Gate in full standby mode is 0.45W.**

Klipsch Gate est un produit classé comme un équipement en réseau avec une fonctionnalité de disponibilité du réseau élevée (HINA).

Klipsch Gate passera automatiquement en mode de veille du réseau après 15 minutes d'inactivité. La consommation électrique de Klipsch Gate en mode de veille du réseau est 4,60 W.

Après 168 heures d'inactivité, le Klipsch Gate passera en mode de veille complète. La consommation électrique de Klipsch Gate en mode de veille complète est de 0,45W.

El Klipsch Gate se clasifica como producto de Equipo en Red con Alta Funcionalidad de Disponibilidad de Red (High Network Availability Functionality, HINA).

El Klipsch Gate pasa automáticamente a la modalidad de espera en red después de 15 minutos sin actividad. El consumo de electricidad del Klipsch Gate en modalidad de espera en red es 4.60 W.

Después de 168 horas sin actividad, el Klipsch Gate pasa a la modalidad de espera total. El consumo de electricidad del Klipsch Gate en modalidad de espera total es 0.45 W.

Klipsch Gate ist als Netzwerkgerät mit hoher Netzverfügbarkeit (HINA) klassifiziert.

Klipsch Gate wird nach 15 Minuten der Inaktivität automatisch in den Netzwerk-Standbymodus geschaltet. Der Stromverbrauch von Klipsch Gate im Netzwerk-Standbymodus beträgt 4,60 W.

Nach 168 Stunden der Inaktivität geht Klipsch Gate in den vollen Standbymodus über. Der Stromverbrauch von Klipsch Gate im vollen Standbymodus beträgt 0,45 W.

Il prodotto Klipsch Gate è classificato Apparecchiatura di rete con funzionalità di elevata disponibilità in rete (HINA).

Klipsch Gate passa automaticamente alla modalità di standby in rete dopo 15 minuti di inattività. Il consumo di potenza di Klipsch Gate nella modalità di standby in rete è pari a 4,60 W.

Dopo 168 ore di inattività, Klipsch Gate pass alla modalità di standby completo. Il consumo di potenza di Klipsch Gate nella modalità di standby completo è pari a 0,45 W.

O Klipsch Gate é classificado como um equipamento em rede com a funcionalidade de elevada disponibilidade de rede (HINA).

O Klipsch Gate muda automaticamente para o modo de espera de rede após 15 minutos de inatividade. O consumo de energia no modo de espera de rede do Klipsch Gate é 4,60 W.

Após 168 horas de inatividade, o Klipsch Gate passa para o modo de espera total. O consumo de energia no modo de espera total do Klipsch Gate é 0,45 W.

Klipsch Gate 归类为“带有高网络可用性功能（HINA）的网络化设备”产品。

在不执行操作 15 分钟之后，Klipsch Gate 将自动切换为网络待机模式。

Klipsch Gate 在网络待机模式中的功耗为 4.60W。

在不执行操作 168 小时之后，Klipsch Gate 将切换为全待机模式。Klipsch Gate 在全待机模式中的功耗为 0.45W。



# Klipsch®

## KEEPERS OF THE SOUND™

3502 WOODVIEW TRACE, INDIANAPOLIS, IN, USA

**KLIPSCH.COM**

©2016, Klipsch Group, Inc. Klipsch Group, Inc. is a wholly-owned subsidiary of Vox International Corporation. Klipsch and Keepers of the Sound are trademarks of Klipsch Group, Inc., registered in the United States and other countries. The *Bluetooth*® word mark is a registered trademark owned by Bluetooth SIG, Inc. and any use of such mark by Klipsch Group, Inc. is under license. Manufactured under license from Dolby Laboratories. Dolby and the double-D symbol are trademarks of Dolby Laboratories. DTS and Play-Fi are registered trademarks of DTS, Inc. For DTS patents, see <http://patents.dts.com>. Manufactured under license from DTS, Inc. DTS, Play-Fi, the Symbol and Play-Fi together in combination with the Symbol are trademarks of DTS, Inc. DTS and Play-Fi are registered trademarks of DTS, Inc. ©DTS, Inc. All Rights Reserved. SPOTIFY is a registered trademark of Spotify AB.

V8 - 0829

## Gate



### WIRELESS MULTI-ROOM READY

The Klipsch Reference Gate is part of the Klipsch Stream Wireless Multi-Room System: an all-encompassing solution for distributing audio throughout your home. Listen to internet radio stations, streaming services, your personal digital music library, CDs, DVDs, etc. For a list of supported streaming services, visit [www.klipsch.com/stream](http://www.klipsch.com/stream). Download the Klipsch Stream app (available for iOS or Android), connect the Gate to your Wi-Fi network, and enjoy. Expand your system to add multiple rooms of audio in your home with other Klipsch Stream Wireless Multi-Room Audio products.

### ADD ANY LEGACY AUDIO SOURCE TO YOUR KLIPSCH STREAM SYSTEM

The Klipsch Gate allows you to add any legacy audio source to your Klipsch Stream Wireless Multi-Room Audio System thanks to a 3.5mm analog audio input. Connect your CD player, turntable, even your 8-track player (if you've still got it) to the Klipsch Gate and enjoy in-room listening by selecting the line in from the Klipsch Stream app. You can also enjoy playback in other rooms of your Klipsch Stream Wireless Multi-Room Audio System.

### MAKE YOUR CURRENT AUDIO SYSTEM WIRELESS AND "CONNECTED" TO STREAMING MUSIC SOURCES

The Klipsch Gate also features a 3.5mm analog audio output, making it easy for you to connect to an external amplifier, a/v receiver or powered speaker system and enjoy wireless multi-room audio.

### BACKLIT, INTEGRATED CONTROLS FOR EASE OF USE

Need to mute the sound, increase/decrease the volume or put the room into standby but aren't near your phone? No problem. The Klipsch Wireless Speaker features backlit integrated controls on the top of the speaker for simple and quick control of the audio in your zone.

### BUILT-IN DUAL BAND Wi-Fi

### FLEXIBLE PLACEMENT OPTIONS

At just 5 1/2" (13.97cm) wide and 1.12" (2.86cm) high, the Gate is small enough to be easily hidden behind any existing audio system.

### SPECIFICATIONS

INPUTS	3.5mm miniplug (analog) Wi-Fi (for DTS Play-Fi™)
OUTPUTS	3.5mm miniplug (analog) Wi-Fi (for DTS Play-Fi™)
DIMENSIONS (WxHxD)	5.5" (13.97cm) x 1.125" (2.86cm) x 1.125" (2.86cm)
FINISH	Black
VOLTAGE	110/240 VAC
WEIGHT	0.7lbs (0.32kg)
BUILT FROM	2016
INCLUDED ACCESSORIES	3.5mm miniplug (analog) audio cable, power cord



# Klipsch®


KEEPERS OF THE SOUND

3502 WOODVIEW TRACE INDIANAPOLIS, IN 46268 | KLIPSCH.COM

All specifications are subject to change without notice. ©2016 Klipsch Group, Inc. Klipsch, Keepers of the Sound and Tractrix are registered trademarks of Klipsch Group, Inc. a wholly-owned subsidiary of Vox International Corporation. The Bluetooth® word mark and logos are registered trademarks owned by Bluetooth SIG, Inc. and any use of such marks by Klipsch Group, Inc. is under license. aptX® software is copyright CSR plc or its group companies. All rights reserved. The aptX® mark and the aptX logo are trademarks of CSR plc or one of its group companies and may be registered in one or more jurisdictions. Dolby and the double-D symbol are registered trademarks of Dolby Laboratories. Amazon Music and the Amazon Music logo are trademarks of Amazon.com, Inc. or its affiliates.

# How to use Connect

You'll need Spotify Premium to use Connect, see details overleaf.

- 1 Add your new device to the same wifi network as your phone, tablet or PC (see product user instructions for details).
- 2 Open the Spotify app on your phone, tablet or PC, and play any song.
- 3 If you're using the app on a phone - tap the song image in the bottom left of the screen. For tablet and PC move to step 4.
- 4 Tap the Connect icon 
- 5 Pick your device from the list. If you can't see it, just check it's connected to the same wifi network as your phone, tablet or PC.

All done! Happy listening.



# Say hello to Spotify Premium

Spotify Premium lets you listen to millions of songs ad-free – the artists you love, the latest hits and discoveries just for you. Simply hit play to hear any song you like, at the highest sound quality.

Check out our current Premium offers at [spotify.com/premium](https://spotify.com/premium)

## Your new device has Spotify Connect built in.

Spotify Connect lets you control the music playing on your device, using the Spotify app on your mobile, tablet or PC.

Listening is seamless. You can take calls, play games, even switch your phone off – all without interrupting the music.

Learn more at [spotify.com/connect](https://spotify.com/connect)



# EXPAND YOUR KLIPSCH WIRELESS STREAMING EXPERIENCE, VISIT [KLIPSCH.COM](http://KLIPSCH.COM)

WIRELESS SPEAKERS | SOUND BARS | WIRELESS GATES



Play-Fi gives you total control to wirelessly stream music to any room from any device

# Klipsch®

©2016 KLIPSCH GROUP, INC., A WHOLLY-OWNED SUBSIDIARY OF VOXX INTERNATIONAL CORPORATION. KLIPSCH AND KEEPERS OF THE SOUND ARE TRADEMARKS OF KLIPSCH GROUP, INC., REGISTERED IN THE USA AND OTHER COUNTRIES. OR DTS PATENTS, SEE [HTTP://PATENTS.DTS.COM](http://PATENTS.DTS.COM), MANUFACTURED UNDER LICENSE FROM DTS, INC. DTS, PLAY-FI, THE SYMBOL, AND PLAY-FI TOGETHER IN COMBINATION WITH THE SYMBOL ARE TRADEMARKS OF DTS, INC. DTS AND PLAY-FI ARE REGISTERED TRADEMARKS OF DTS, INC. © DTS, INC. ALL RIGHTS RESERVED.





## WELCOME TO THE KLIPSCH FAMILY

Not only are you the proud owner of a Klipsch premium speaker - you've become part of an audio legacy. Please be sure to write a review about your new purchase and sign up for our newsletter at [Klipsch.com](https://www.klipsch.com) for exclusive news, events and discounts.

### OUR HISTORY

The genesis of something very special occurred in a tiny tin shed in Hope, Arkansas in 1946 when Paul W. Klipsch, genius, madman and maverick, designed and hand-built the first Klipsch speaker with the goal of bringing live music into his living room.

In the understatement of the century, we'd say he succeeded.


Learn more at [Klipsch.com/founder](https://www.klipsch.com/founder)

**Klipsch**<sup>®</sup>  
KEEPERS OF THE SOUND

**Klipsch**<sup>®</sup>  
REFERENCE  
**GATE**

**IMPORTANT SAFETY INSTRUCTIONS**

## **IMPORTANT SAFETY INSTRUCTIONS!**

1. **READ** these instructions.
2. **KEEP** these instructions.
3. **HEED** all warnings.
4. **FOLLOW** all instructions.
5. **DO NOT** use this apparatus near water.
6. **CLEAN ONLY** with dry cloth.
7. **DO NOT** block any ventilation openings. Install in accordance with the manufacturer's instructions.
8. **DO NOT** install near any heat sources such as radiators, heat registers, stoves, or other apparatus (including amplifiers) that produce heat.
9. **DO NOT** defeat the safety purpose of the polarized or grounding type plug. A polarized plug has two blades with one wider than the other. A grounding type plug has two blades and a third grounding prong. The wider blade or the third prong are provided for your safety. If the provided plug does not fit into your outlet, consult an electrician for replacement of the obsolete outlet.
10. **PROTECT** the power cord from being walked on or pinched, particularly at plugs, convenience receptacles, and the point where they exit from the apparatus.
11. **ONLY USE** attachments/accessories specified by the manufacturer.
12. **USE ONLY** with the cart, stand, tripod, bracket, or table specified by the manufacturer, or sold with the apparatus. When a cart is used, use caution when moving the cart/apparatus combination to avoid injury from tip-over. 
13. **UNPLUG** this apparatus during lightning storms or when unused for long periods of time.
14. **REFER** all servicing to qualified service personnel. Servicing is required when the apparatus has been damaged in any way, such as power-supply cord or plug is damaged, liquid has been spilled or objects have fallen into the apparatus, the apparatus has been exposed to rain or moisture, does not operate normally, or has been dropped.
15. **DO NOT** expose this apparatus to dripping or splashing and ensure that no objects filled with liquids, such as vases, are placed on the apparatus.
16. To completely disconnect this apparatus from the AC Mains, disconnect the power supply cord plug from the AC receptacle.

17. The mains plug/appliance coupler is used as disconnect device, the disconnect device shall remain readily operable.
18. DO NOT overload wall outlets or extension cords beyond their rated capacity as this can cause electric shock or fire.



The exclamation point, within an equilateral triangle, is intended to alert the user to the presence of important operating and maintenance (servicing) instructions in the literature accompanying the product.



The lightning flash with arrowhead symbol within an equilateral triangle is intended to alert the user to the presence of uninsulated "dangerous voltage" within the product's enclosure that may be of sufficient magnitude to constitute a risk of electrical shock to persons.

**WARNING:** To reduce the risk of fire or electrical shock, do not expose this apparatus to rain or moisture.

**WARNING:** No naked flame sources - such as candles - should be placed on the product.

**THIS PRODUCT CONTAINS A LITHIUM COIN CELL BATTERY. IF MISUSED OR ABUSED THIS CAN RESULT IN:**

- **Smoke or gas hazard**
- **Heat hazard**
- **Fire hazard**
- **Explosion hazard**



**WARNING:** Do not place batteries in mouth or ingest. Chemical burn hazard. Keep new and used batteries out of reach of children and pets. If swallowed, it can cause severe internal burns in just 2 hours and can lead to death.

If you think batteries might have been swallowed or placed inside any part of the body, seek immediate medical attention.

**WARNING:** If battery compartment does not close securely, stop using the product and keep it away from children and pets.

**WARNING:** Do not handle leaking or damaged Lithium batteries.

**WARNING:** Risk of leakage. Only use the specified type of batteries. Never mix new and used batteries. Observe correct



polarity. Remove batteries from products that are not in use for extended periods of time. Store batteries in a dry place.

**WARNING:** Batteries (battery pack or batteries installed) shall not be exposed to excessive heat such as sunshine, fire or the like.

**WARNING:** Danger of explosion if battery is incorrectly replaced. Replace only with the same or equivalent type.

**WARNING:** Do not recharge non-rechargeable batteries.

**WARNING:** Avoid exposure to extreme heat or cold.

Please dispose of any used batteries properly, following any local regulations. Do not incinerate.



**WARNING:** Do Not Open! Risk of Electrical Shock. Voltages in this equipment are hazardous to life. No user-serviceable parts inside. Refer all servicing to qualified service personnel.

Place the equipment near a main power supply outlet and make sure that you can easily access the power breaker switch.

**WARNING:** This product is intended to be operated ONLY from the AC Voltages listed on the back panel or included power supply of the product. Operation from other voltages other than those indicated may cause irreversible damage to the product and void the products warranty. The use of AC Plug Adapters is cautioned because it can allow the product to be plugged into voltages in which the product was not designed to operate. If the product is equipped with a detachable power cord, use only the type provided with your product or by your local distributor and/or retailer. If you are unsure of the correct operational voltage, please contact your local distributor and/or retailer.

## **EU COMPLIANCE INFORMATION**

Eligible to bear the CE mark; Conforms to European Union Low Voltage Directive 2006/95/EC; European Union EMC Directive 2004/108/EC; European Union Restriction of Hazardous Substances Recast (RoHS2) Directive 2011/65/EC; European Union WEEE Directive 2002/96/EC; European Union Eco-Design Directive 2009/125/EC; European Union Registration, Evaluation, Authorization and Restriction of Chemicals (REACH) Directive 2006/121/EC; European Union Radio and Telecommunications Terminal Equipment (R&TTE) Directive 1999/5/EC.

This product contains batteries that are covered under the 2006/66/EC European Directive, which cannot be disposed of with normal household waste. Please follow local regulations.

You may obtain a free copy of the Declaration of Conformity by contacting your dealer, distributor, or Klipsch Group, Inc.'s worldwide headquarters. Contact information can be found here: <http://www.klipsch.com/Contact-Us>

## **WEEE NOTICE**

Note: This mark applies only to countries within the European Union (EU) and Norway.



This appliance is labeled in accordance with European Directive 2002/96/EC concerning waste of electrical and electronic equipment (WEEE). This label indicates that this product should not be disposed of with household waste. It should be deposited at an appropriate facility to enable recovery and recycling.

## **FCC AND CANADA EMC COMPLIANCE INFORMATION**

This device complies with Part 15 of the FCC Rules. Operation is subject to the following two conditions:

- (1) This device may not cause harmful interference, and
- (2) This device must accept any interference received, including interference that may cause undesired operation.

NOTE: This equipment has been tested and found to comply with the limits for a Class B digital device, pursuant to part 15 of the FCC Rules. These limits are designed to provide reasonable protection against harmful interference in a residential installation. This equipment generates, uses and can radiate radio frequency energy and, if not installed and used in accordance with the instructions, may cause harmful interference

to radio communications. However, there is no guarantee that interference will not occur in a particular installation. If this equipment does cause harmful interference to radio or television reception, which can be determined by turning the equipment off and on, the user is encouraged to try to correct the interference by one or more of the following measures:

- Reorient or relocate the receiving antenna.
- Increase the separation between the equipment and receiver.
- Connect the equipment into an outlet on a circuit different from that to which the receiver is connected.
- Consult the dealer or an experienced radio/TV technician for help.

Approved under the certification provision of FCC Part 15 as a Class B Digital Device.

Caution: Changes or modifications not expressly approved by the manufacturer could void the user's authority to operate this device.

Caution: To comply with the limits of the Class B digital device, pursuant to Part 15 of the FCC Rules, this device is to comply with Class B limits. All peripherals must be shielded and grounded. Operation with non-certified peripherals or non-shielded cables may result in interference to radio or reception.

This Class B digital apparatus complies with Canadian ICES-003. CAN ICES-3 (B)/NMB-3(B) Cet appareil numérique de la classe B est conforme à la norme NMB-003 du Canada.

#### **WIRELESS TRANSMITTER COMPLIANCE INFORMATION**

The term "IC:" before the radio certification number only signifies that Industry Canada technical specifications were met.

Le terme «IC:» avant le numéro de certification radio signifie seulement que les spécifications techniques d'Industrie Canada ont été respectées.

This device complies with Industry Canada's licence-exempt RSSs. Operation is subject to the following two conditions:(1) This device may not cause interference; and(2) This device must accept any interference, including interference that may cause

undesired operation of the device.

Le présent appareil est conforme aux CNR d'Industrie Canada applicables aux appareils radio exempts de licence. L'exploitation est autorisée aux deux conditions suivantes :

- (1) l'appareil ne doit pas produire de brouillage;
- (2) l'utilisateur de l'appareil doit accepter tout brouillage radioélectrique subi, même si le brouillage est susceptible d'en compromettre le fonctionnement.

This equipment complies with FCC and IC radiation exposure limits set forth for an uncontrolled environment. This equipment should be installed and operated with minimum distance 20cm between the radiator and your body. This transmitter must not be co-located or operating in conjunction with any other antenna or transmitter.

Cet appareil est conforme à FCC et IC l'exposition aux rayonnements limites fixées pour un environnement non contrôlé. Cet appareil doit être installé et utilisé avec une distance minimale de 20 cm entre le radiateur et votre corps. Cet transmetteur ne doit pas être co-situé ou opérant en liaison avec toute autre antenne ou transmetteur.

#### **FCC/IC RADIATION EXPOSURE STATEMENT**

This equipment complies with FCC/IC RSS-102 radiation exposure limits set forth for an uncontrolled environment. This equipment should be installed and operated with minimum distance 20cm between the radiator & your body.

#### **ONLY FOR INDOOR USE**

**HD CONTROL CENTER (RP-HUB1) CAN SUPPORT WIRELESS 5G BAND.**



**ENGLISH - WARRANTY - U.S.**

Klipsch Group, Inc. (KGI) warrants to the original retail purchaser that this product is to be free from defective materials and workmanship for a period of two (2) years on electronics, three (3) years on drivers and tweeters, and two (2) years on the HD Wireless Hub from the date of purchase, if it is properly used and maintained. If this product proves defective in either material or workmanship, KGI, at its option, will (a) repair the product, or (b) replace the product, at no charge for parts or labor. If the product model is no longer available and cannot be repaired effectively or replaced with an identical model, KGI at its sole option may replace the unit with a current model of equal or greater value. In some cases, modification to the mounting surface may be required where a new model is substituted. KGI assumes no responsibility or liability for such modification. To obtain a repair or replacement under the terms of this warranty, please return to dealer first, if possible, and the dealer will direct you accordingly for repairs or replacement. You will be required to submit a copy of the original receipt.

Return shipping for exchanges/repairs is the sole responsibility of the original retail purchaser.

**Limitations:**

- This limited warranty does not cover failure of the product resulting from improper installation, misuse, abuse, accident, neglect, mishandling, or wear from ordinary use or environmental deterioration.
- This limited warranty does not cover cosmetic damage, including paint damage, or consequential damage to other components or premises which may result for any reason from the failure of the product.
- This limited warranty is null and void for products not used in accordance with KGI's instructions.
- This limited warranty is null and void for products with altered or missing serial numbers and for products not purchased from an authorized dealer.
- This limited warranty terminates if you sell or otherwise transfer this product to another party.

THIS WARRANTY GIVES YOU SPECIFIC LEGAL RIGHTS, AND YOU MAY ALSO HAVE OTHER RIGHTS WHICH VARY FROM STATE TO STATE, JURISDICTION TO JURISDICTION OR COUNTRY TO COUNTRY. KGI'S RESPONSIBILITY FOR MALFUNCTIONS AND DEFECTS IN HARDWARE IS LIMITED TO REPLACEMENT OR REPAIR AS SET FORTH IN THIS WARRANTY STATEMENT. ALL EXPRESS AND IMPLIED WARRANTIES FOR THE PRODUCT, INCLUDING BUT NOT LIMITED TO ANY IMPLIED WARRANTIES OF MERCHANTABILITY AND FITNESS FOR A PARTICULAR PURPOSE, ARE LIMITED IN TIME TO THE TERM OF THIS WARRANTY. SOME STATES, JURISDICTIONS OR COUNTRIES DO NOT ALLOW THE EXCLUSION OF CERTAIN IMPLIED WARRANTIES OR CONDITIONS, OR LIMITATIONS ON HOW LONG AN IMPLIED WARRANTY OR CONDITION LASTS, SO THIS LIMITATION MAY NOT APPLY TO YOU. KGI DOES NOT ACCEPT LIABILITY FOR SPECIAL, INDIRECT, CONSEQUENTIAL OR INCIDENTAL DAMAGES, INCLUDING WITHOUT LIMITATION, ANY LIABILITY FOR THIRD PARTY CLAIMS AGAINST YOU FOR DAMAGES OR FOR PRODUCTS NOT BEING AVAILABLE FOR USE. THE MAXIMUM LIABILITY FOR WHICH KGI MAY BE RESPONSIBLE WILL BE NO MORE THAN THE AMOUNT YOU PAID FOR THE PRODUCT THAT IS THE SUBJECT OF THE CLAIM. SOME STATES, JURISDICTIONS OR COUNTRIES DO NOT ALLOW THE EXCLUSION OR LIMITATION OF SPECIAL, INDIRECT, INCIDENTAL OR CONSEQUENTIAL DAMAGES, SO THE ABOVE LIMITATION OR EXCLUSION MAY NOT APPLY TO YOU.

**WARRANTY OUTSIDE THE U.S.**

The Warranty on this product shall comply with applicable law when sold to a consumer outside of the United States. To obtain any applicable warranty service, please contact the dealer from which you purchased this product, or the distributor that supplied this product.

**FRENCH - GARANTIE - ÉTATS-UNIS**

Klipsch Group, Inc. (KGI) garantit à l'acheteur initial que ce produit est exempt de défauts de matériaux et de fabrication pour une période de deux (2) ans sur l'électronique, trois (3) ans sur les bobines mobiles et les haut-parleurs des aigus et deux (2) ans sur le concentrateur sans fil HD, à compter de sa date d'achat et s'il a été correctement utilisé et entretenu. Si ce produit s'avère défectueux en termes de pièces ou de main d'œuvre, KGI, à sa discrétion, (a) réparera le produit, ou (b) remplacera le produit sans facturer les pièces ni la main d'œuvre. Si ce modèle de produit n'est plus disponible et ne peut pas être efficacement réparé ni remplacé par un modèle identique, KGI pourra, à sa seule discrétion, remplacer l'appareil par un modèle plus récent de valeur identique ou supérieure. Dans certains cas, la substitution par un nouveau modèle pourra nécessiter la modification de la surface de montage. KGI décline toute responsabilité pour une telle modification. Pour obtenir une réparation ou un remplacement au titre de la présente garantie, veuillez d'abord prendre contact avec le revendeur, dans la mesure du possible, qui vous indiquera alors comment procéder pour une réparation ou un remplacement. Vous devrez fournir une copie de la facture d'origine.

L'expédition des produits retournés pour les échanges/réparations est strictement sous la responsabilité de l'acheteur original.

**Limitations :**

- Cette garantie limitée ne couvre pas la défaillance du produit résultant d'une mauvaise installation, d'un usage abusif ou incorrect, d'un accident, de négligence, d'une mauvaise manipulation, d'usure résultant de l'usage normal ou de détérioration due aux conditions ambiantes.
- Cette garantie limitée ne couvre pas les dommages esthétiques, notamment l'endommagement de la peinture, ni les dommages indirects à d'autres composants ou aux locaux résultant, quelle qu'en soit la raison, de la défaillance du produit.
- Cette garantie limitée est nulle et non avenue pour les produits n'ayant pas été utilisés conformément aux instructions de KGI.
- Cette garantie limitée est nulle et non avenue pour les produits dont le numéro de série est absent ou a été modifié, ainsi que pour les produits non achetés auprès d'un détaillant agréé.
- Cette garantie limitée prend fin en cas de vente ou de cession du produit à un tiers.

CETTE GARANTIE DONNE À L'ACHETEUR DES DROITS SPÉCIFIQUES. CELUI-CI PEUT ÉGALEMENT BÉNÉFICIER D'AUTRES DROITS QUI VARIENT SELON LES ÉTATS OU PROVINCES, LES JURISDICTIONS ET LES PAYS. LA RESPONSABILITÉ DE KGI EN CAS DE MAUVAIS FONCTIONNEMENT OU DE DÉFAILLANCE DU MATÉRIEL EST LIMITÉE AU REMPLACEMENT OU À LA RÉPARATION DE CELUI-CI DANS LES CONDITIONS ÉTABLIES PAR CETTE DÉCLARATION DE GARANTIE. TOUTES LES GARANTIES EXPRESSES ET IMPLICITES RELATIVES AU PRODUIT, Y COMPRIS, MAIS NON EXCLUSIVEMENT, TOUTE GARANTIE IMPLICITE DE VALEUR MARCHANDE OU D'ADÉQUATION À UN USAGE PARTICULIER, SONT LIMITÉES À LA PÉRIODE DE CETTE GARANTIE. CERTAINS ÉTATS, PROVINCES, JURISDICTIONS OU PAYS NE PERMETTANT PAS L'EXCLUSION DE CERTAINES CONDITIONS OU GARANTIES IMPLICITES, OU LA LIMITATION DE DURÉE DES CONDITIONS OU GARANTIES IMPLICITES, LES LIMITATIONS CI-DESSUS PEUVENT NE PAS ÊTRE APPLICABLES. KGI DÉCLINE TOUTE RESPONSABILITÉ POUR LES DOMMAGES PARTICULIERS, INDIRECTS, CONSÉCUTIFS OU ACCESSOIRES, Y COMPRIS MAIS SANS S'Y LIMITER, TOUTE RESPONSABILITÉ POUR LES PLAINTES CONTRE VOUS PAR DES TIERS POUR DOMMAGES OU NON-DISPONIBILITÉ DES PRODUITS POUR L'UTILISATEUR. LA RESPONSABILITÉ MAXIMALE DE KGI NE DÉPASSERA PAS LE MONTANT PAYÉ POUR LE PRODUIT OBJET DE LA PLAINTÉ. CERTAINS ÉTATS, PROVINCES, JURISDICTIONS OU PAYS NE PERMETTANT PAS L'EXCLUSION OU LA LIMITATION DES DOMMAGES PARTICULIERS, INDIRECTS, ACCESSOIRES OU CONSÉCUTIFS, LES LIMITATIONS CI-DESSUS PEUVENT NE PAS ÊTRE APPLICABLES.

**GARANTIE EN DEHORS DES ÉTATS-UNIS**

Si ce produit est vendu dans un pays autre que les États-Unis, la garantie doit être conforme aux lois en vigueur. Pour bénéficier de toute intervention sous garantie applicable, contactez le revendeur auprès duquel le produit a été acheté ou le distributeur l'ayant fourni.

**SPANISH - GARANTÍA EN LOS EE.UU.**

Klipsch Group, Inc. (KGI) garantiza al comprador original al detalle que este producto no presentará defectos ni de materiales ni de mano de obra durante un período de dos (2) años en componentes electrónicos, tres (3) años en transductores y tweeters, y dos (2) años en el centro inalámbrico de Alta Definición (HD) a partir de la fecha de compra, si se usa y se mantiene apropiadamente. Si el modelo del producto ya no se encuentra disponible y no puede ser reparado eficazmente o reemplazado por un modelo idéntico, KGI, a su exclusiva discreción, podrá reemplazar la unidad por un modelo actual de igual o más valor. En algunos casos podría ser necesario modificar la superficie de montaje cuando se reemplaza con un modelo nuevo. KGI no asume responsabilidad alguna por dicha modificación. Para obtener una reparación o reemplazo bajo los términos de esta garantía, favor de dirigirse primero al comerciante, si esto fuera posible, y ese comerciante le indicará cómo proceder para cualquier reparación o reemplazo. Tendrá que presentar una copia del recibo original.

Los gastos de envío para cualquier reemplazo o reparación son la responsabilidad del comprador al por menor original de este producto.

**LIMITACIONES**

- Esta garantía limitada no cubre ninguna falla de este producto que resulte de una instalación defectuosa, uso inadecuado, abuso, accidente, negligencia, manejo descuidado, o desgaste por el uso ordinario o deterioración ambiental.
- Esta garantía limitada no cubre daños cosméticos, incluso daños de pintura, ni daños indirectos a otros componentes o locales, que puedan por cualquier motivo resultar de un fallo del producto.
- Esta garantía limitada es nula y sin efecto para productos que no se utilicen conforme a las instrucciones de KGI.
- Esta garantía limitada es nula y sin efecto para aquellos productos sin números de serie o con números de serie desfigurados, así como para productos que no hayan sido comprados mediante un comerciante autorizado.
- Esta garantía limitada termina si usted vende o de cualquier otra manera transfiere este producto a otra persona.

ESTA GARANTÍA LE OTORGA DERECHOS LEGALES ESPECÍFICOS, Y UD. TAMBIÉN PUDIERA TENER OTROS DERECHOS QUE VARIEN DE UN ESTADO A OTRO, DE UNA JURISDICCIÓN A OTRA, O DE UN PAÍS A OTRO. LA RESPONSABILIDAD DE KGI POR MALOS FUNCIONAMIENTOS Y DEFECTOS EN EL HARDWARE SE LIMITA A REEMPLAZOS O REPARACIONES CONFORME SE ESPECIFICA EN ESTA DECLARACIÓN DE GARANTÍA. TODAS LAS GARANTÍAS EXPRESAS E IMPLÍCITAS PARA EL PRODUCTO QUE INCLUYEN, PERO NO TAXATIVAMENTE, A CUALESQUIERA GARANTÍAS IMPLÍCITAS DE COMERCIABILIDAD Y APTITUD PARA UN FIN O USO EN PARTICULAR, ESTÁN LIMITADAS EN TIEMPO AL PLAZO DE ESTA GARANTÍA. ALGUNOS ESTADOS, JURISDICIONES O PAÍSES NO PERMITEN LA EXCLUSIÓN DE CIERTAS GARANTÍAS O CONDICIONES IMPLÍCITAS, O LÍMITES SOBRE EL TIEMPO QUE DURA UNA GARANTÍA O CONDICIONES IMPLÍCITAS. ASÍ PUES, ESTA LIMITACIÓN PUDIERA NO SER APPLICABLE A USTED. KGI NO ACEPTA RESPONSABILIDAD POR DAÑOS ESPECIALES, INDIRECTOS, EMERGENTES, O INCIDENTALES, INCLUYENDO, PERO NO TAXATIVAMENTE, CUALQUIER RESPONSABILIDAD POR RECLAMACIONES DE TERCEROS CONTRA USTED POR DAÑOS O POR PRODUCTOS QUE NO ESTÉN DISPONIBLES PARA EL USO. LA RESPONSABILIDAD MÁXIMA QUE PUDIERA TENER KGI NO EXCEDERÍA LA CANTIDAD QUE USTED PAGÓ POR EL PRODUCTO MATERIA DE LA RECLAMACIÓN. ALGUNOS ESTADOS, JURISDICIONES O PAÍSES NO PERMITEN LA EXCLUSIÓN O LIMITACIÓN DE DAÑOS ESPECIALES, INDIRECTOS, INCIDENTALES O EMERGENTES Y, POR LO TANTO, LA ANTERIOR LIMITACIÓN O EXCLUSIÓN PUDIERA NO SER APPLICABLE A USTED.

**GARANTÍA FUERA DE LOS EE.UU.**

La Garantía de este producto, si se vendió a un consumidor fuera de los Estados Unidos, deberá cumplir con el derecho aplicable. Para obtener cualquier servicio aplicable bajo la garantía, favor de ponerse en contacto con el comerciante al cual usted le compró este producto, o con el distribuidor que lo suministró.